



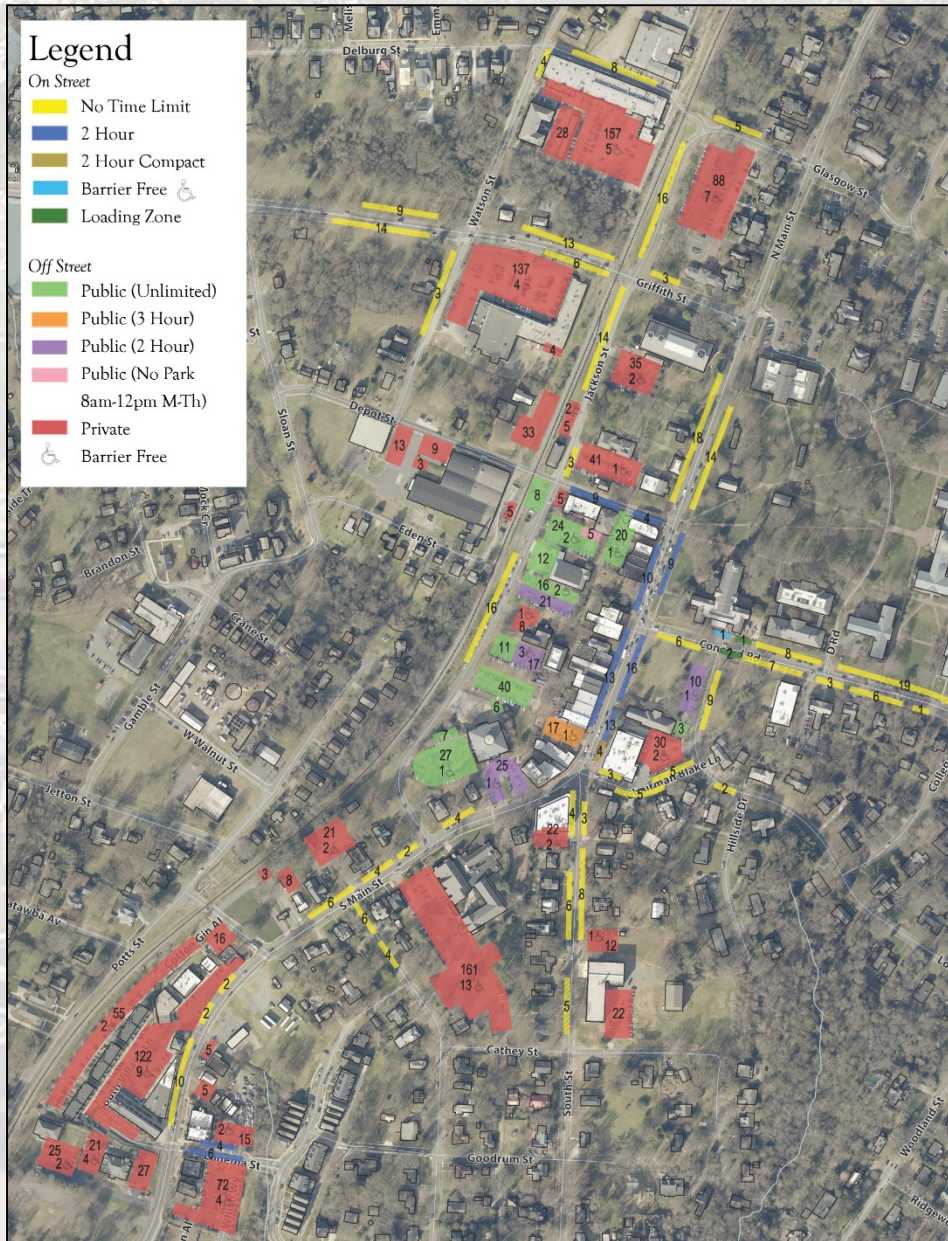
Parking

May 9, 2017

CREECH & ASSOCIATES



Parking: Where are we now?



Public On-Street: 371

Public Off-Street: 328

Private Off-Street: 1,231

Total Supply: 1,930 spaces

Use	Area
Office (4 spaces/1000 sf)	92,172
Retail (4 spaces/1000 sf)	28,786
Restaurant (4 spaces/1000 sf)	24,546
Institutional (3 spaces/1000 sf)	29,550
Hotel (2 spaces/1000 sf)	12,156
Other (Dance) (2 spaces/1000 sf)	4,193
Total	193,964
Total Raw Need	703 spaces

What About a Parking Deck?

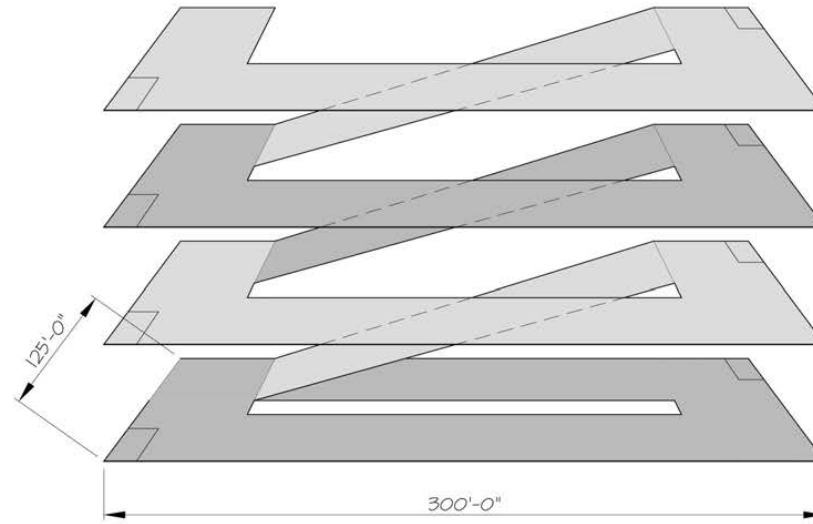


Image Source: Rich & Associates Consulting Inc., 2011 Comprehensive Parking Study, Davidson, NC

Most Efficient Deck

300 Spaces

125 ft X 300 ft

Total Cost Per Space:
\$18,000

What About a Parking Deck?

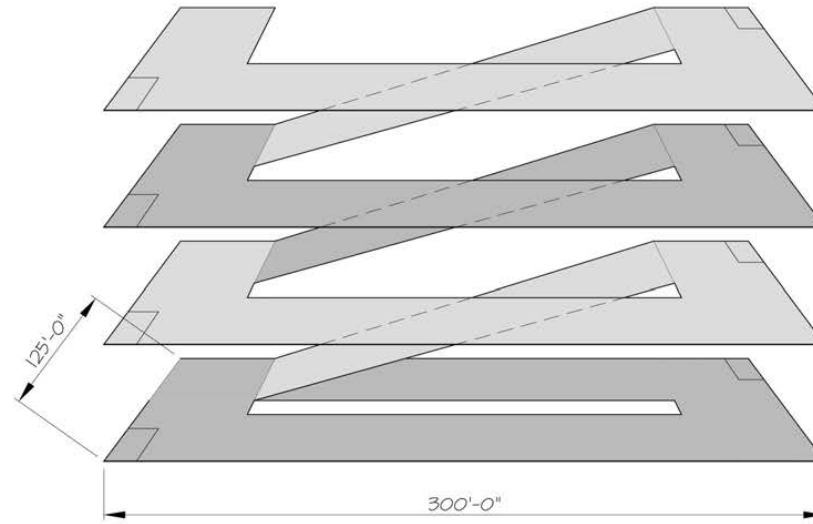


Image Source: Rich & Associates Consulting Inc., 2011 Comprehensive Parking Study, Davidson, NC

Most Efficient Deck

300 Spaces

125 ft X 300 ft

Total Cost Per Space:
\$18,000

300 spaces = \$5,400,000
+ 20% soft costs of \$1,079,000
\$6,479,000

What About a Parking Deck?

Maximum
Debt Service:
\$603,000 /
year

Over a 3 penny increase
to the Ad Valorem Tax
Rate

Parking: Saturday @ 10 am



Parking: Saturday Morning Peaks



Total Spaces
within 4 minute
walk of
Farmer's 694 spaces*
Market:
9-11 am
Peak: (71-74%)

**Includes Metrolina but does not include DUMC lot (175 spaces) which was virtually empty during that*

pretty



Parking: Signage – Better Visibility and Behavioral Psychology



Parking: Thursday @ 10 am

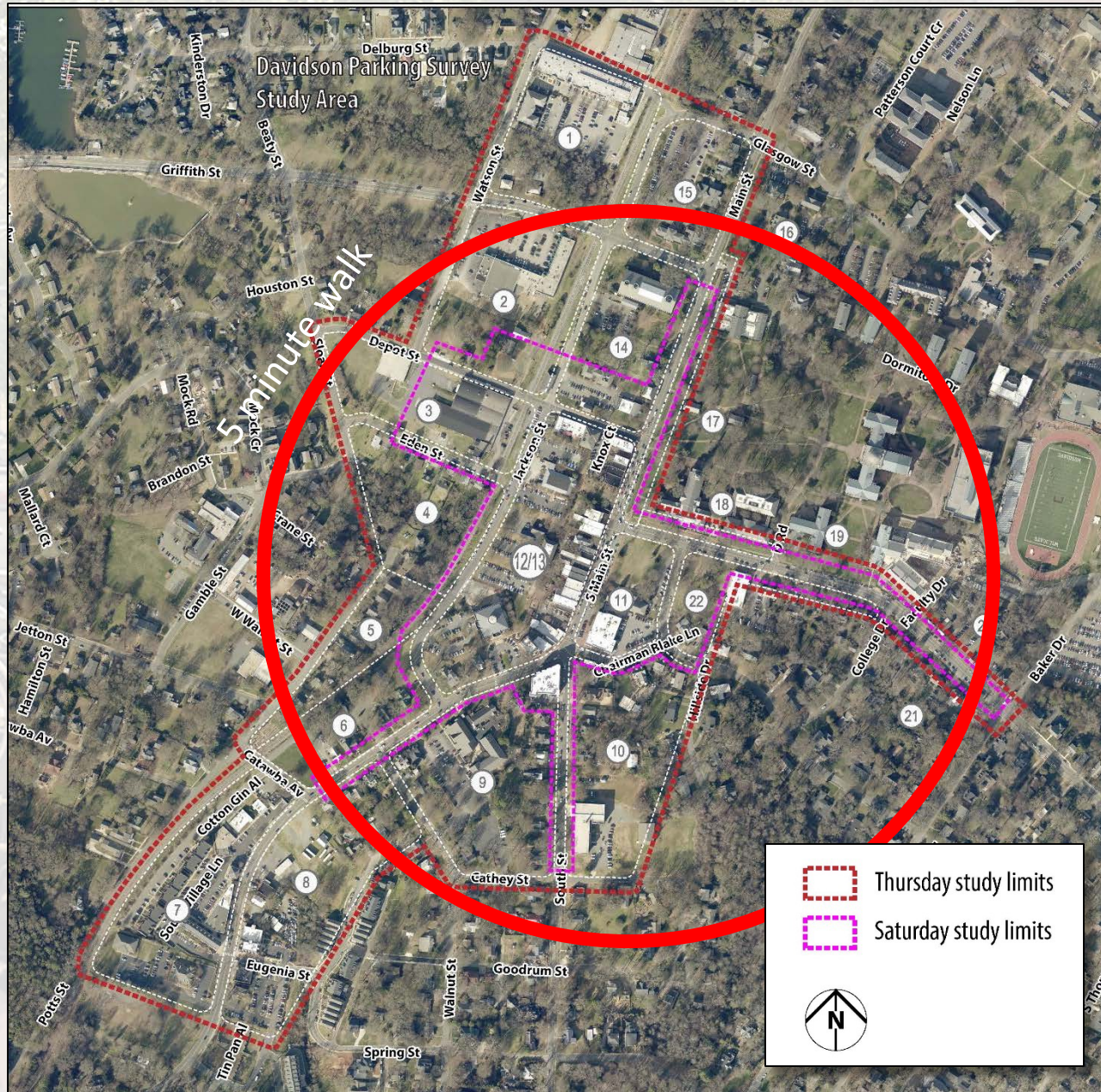


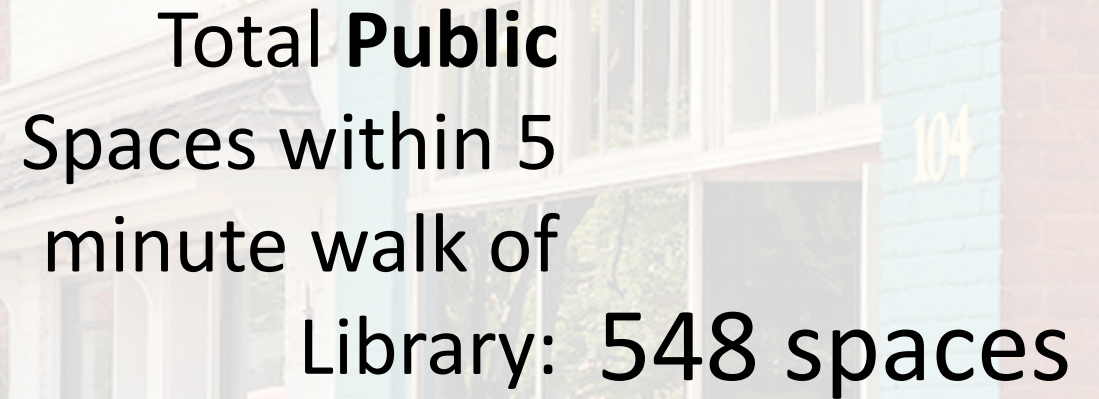
Current Supply

Total Spaces
within 5 minute
walk of Library: 992 spaces

Usage: 52%

Available
Capacity: 479 spaces





Total **Public**
Spaces within 5
minute walk of
Library: **548 spaces**

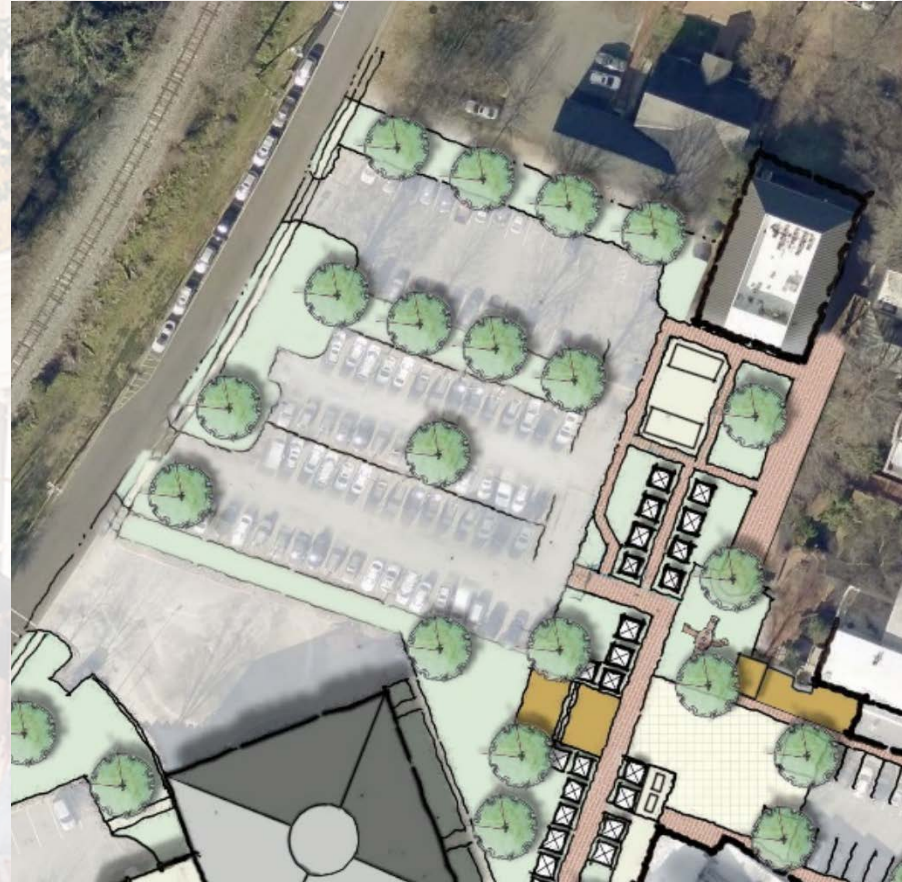
Usage: 73%

Available
Capacity: 147 spaces

Short Term Options: Expand Jackson Street Surface Lot



Existing spaces: 71



Expected new spaces: 93-95

Potential Increase:
22-24 spaces

Estimated Cost:
Medium

*(We will likely have
to install
stormwater
detention)*

Short Term Options: Opportunistic Parking

Convert parallel to
reverse angle along
Jackson

Gain = 33 spots
Difficulty = Hard

Expand public lot

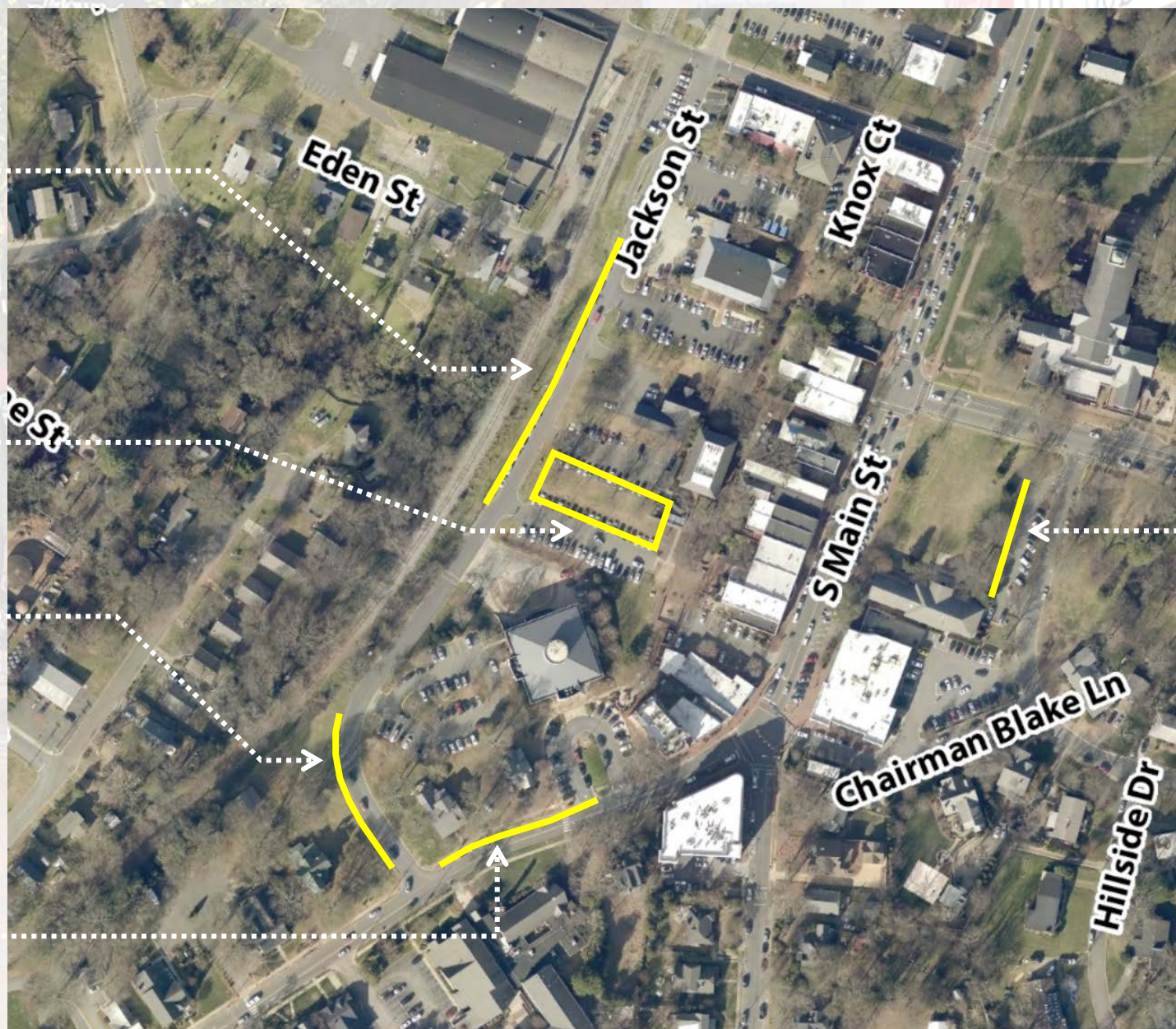
Gain = 24-28 spots
Difficulty = Moderate

Add reverse angle on
street along Jackson

Gain = 20 spots
Difficulty = Easy

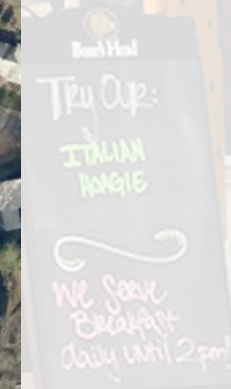
Add angle/reverse angle
on street along Main

Gain = 24 spots
Difficulty = Easy



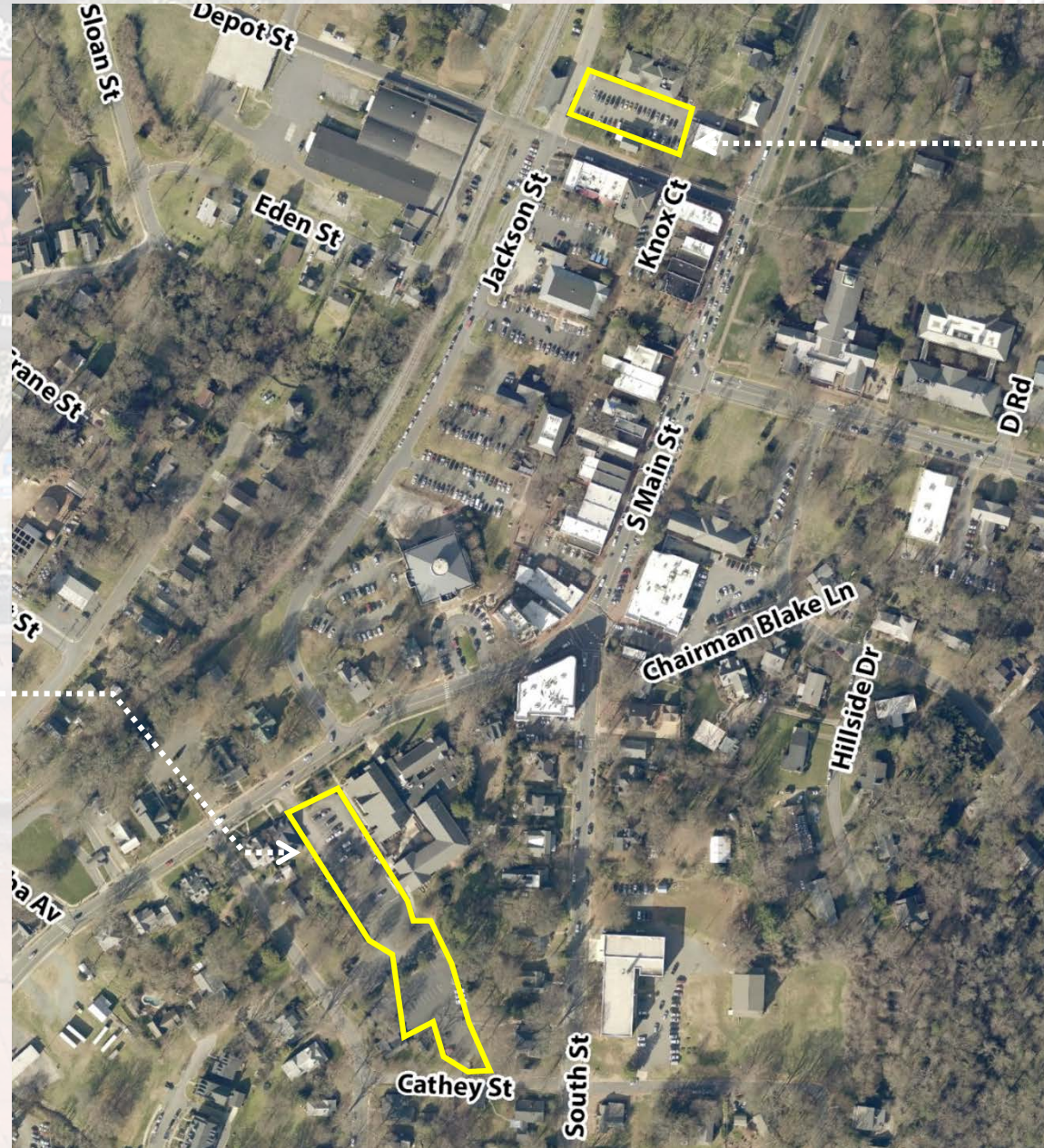
Add reverse angle to
Library lot

Gain = 16 spots
Difficulty = Easy



Short Term Options: Shared Parking

Davidson United Methodist
Church Lot on South Main
Gain = 175 spots
Difficulty = Easy



Davidson College lot on
Jackson
(Evening/Weekend only)
Gain = 41 spots
Difficulty = Easy

Get a ride in minutes.



Possible Solutions: Ride Share Subsidies



- Altamonte Springs, FL
- Using Uber in lieu of conventional transit
- 20% discount for all trips in the city
- 25% discount for all trips to and from light rail station
- First year budget of \$500,000

Possible Solutions: Enhanced Bicycle Choices

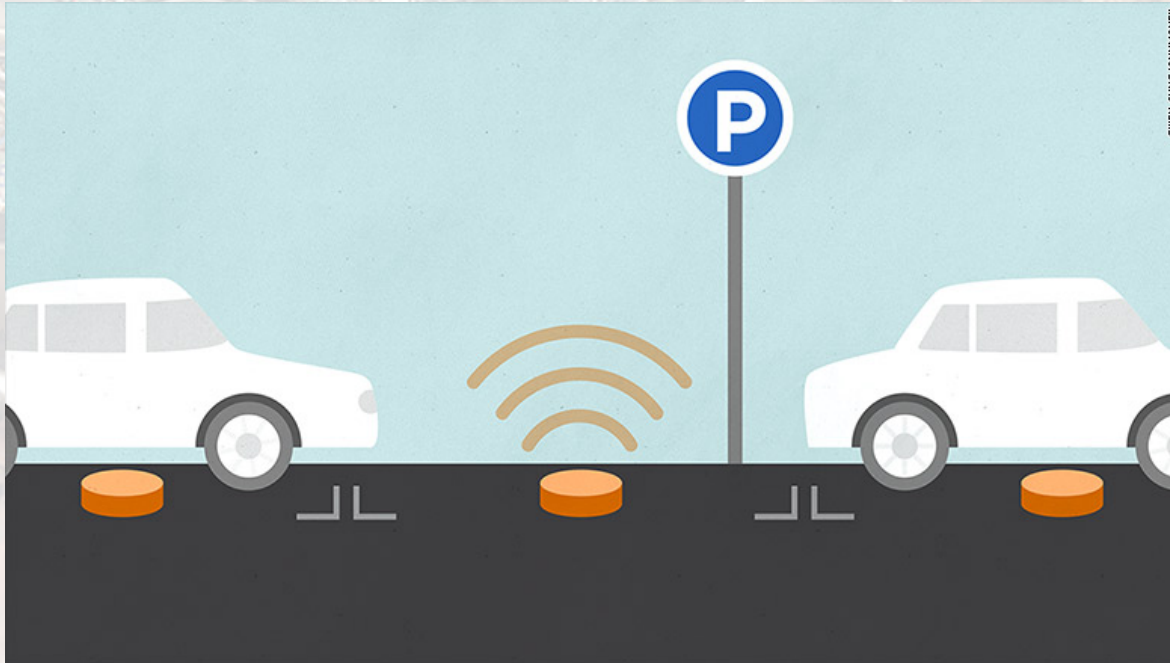


Possible Solutions: App-Based Parking Availability

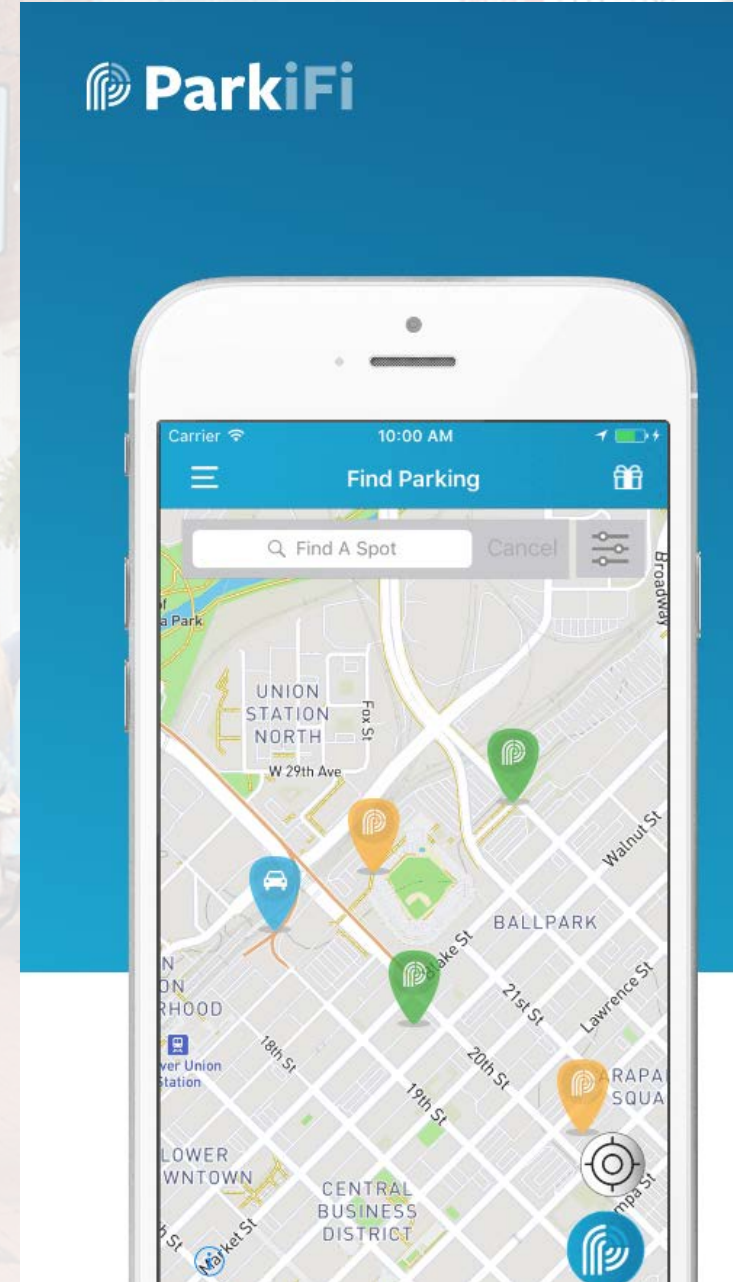
Image Source: The Denver Post



Image Source: money.cnn.com

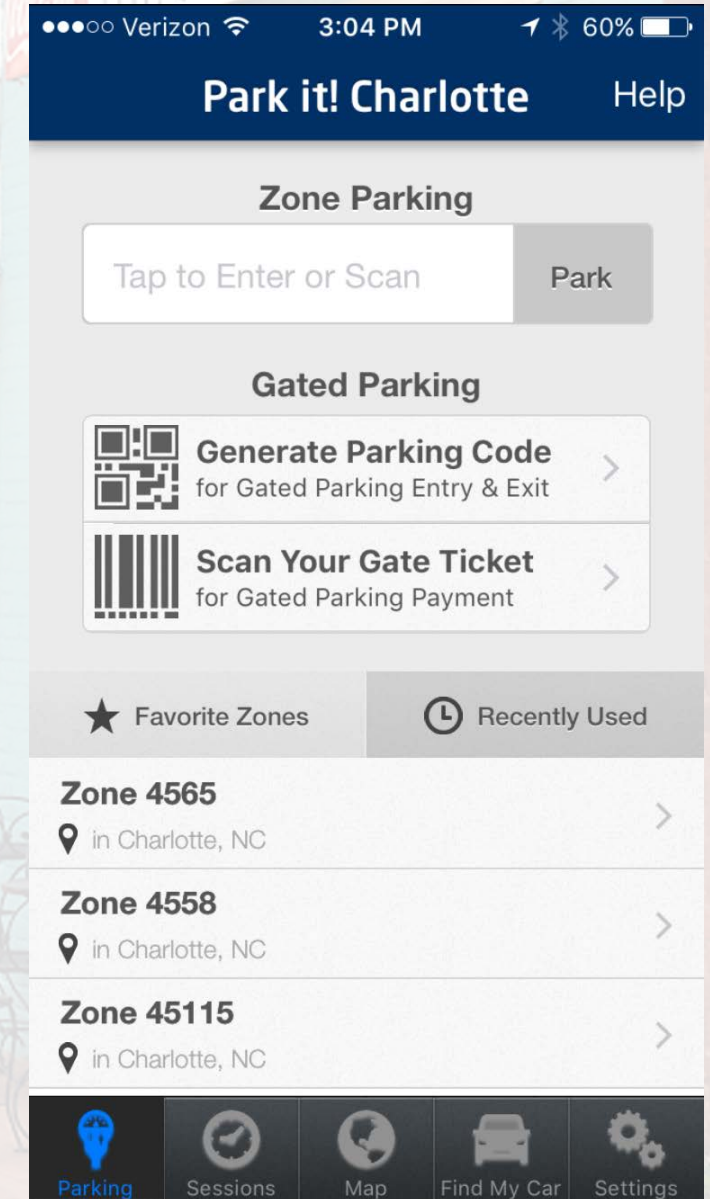


GWEN SUNG/SHUTTERSTOCK



\$30
per
sensor

Possible Solutions: Fee-Based Strategies (Meters)



Possible Solutions: Fixed-Route Trolley & Shared Autonomous Transit



Possible Solutions: Fixed-Route Trolley & Shared Autonomous Transit



Short Term Options: Opportunistic Parking

Convert parallel to
reverse angle along
Jackson

Gain = 33 spots
Difficulty = Hard

Expand public lot

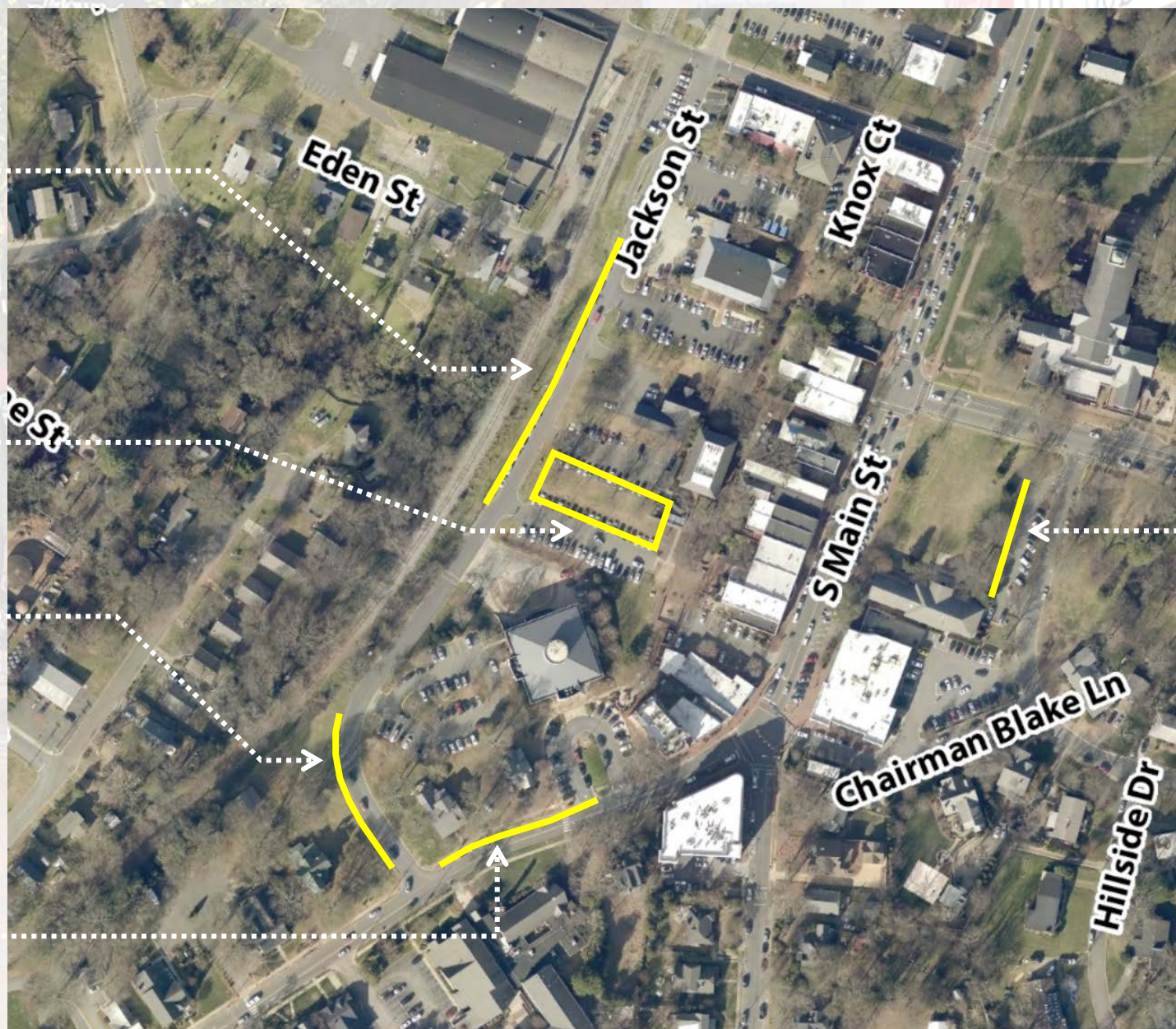
Gain = 24-28 spots
Difficulty = Moderate

Add reverse angle on
street along Jackson

Gain = 20 spots
Difficulty = Easy

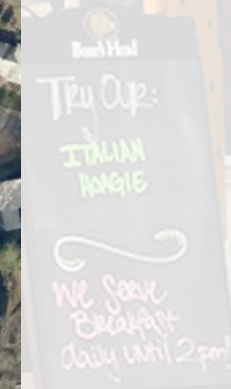
Add angle/reverse angle
on street along Main

Gain = 24 spots
Difficulty = Easy



Add reverse angle to
Library lot

Gain = 16 spots
Difficulty = Easy



Final Recommendations – New Spaces

Opportunities	Number of Additional Spaces
Strategic On-Street Space Additions (Easy + Moderate)	56
Jackson Street Lot Expansion	28
Parking Easements with Privately-Owned Lots	150+
Total Short Term Additions	234

Final Recommendations – Improved Mobility

- ✓ Signage Enhancements
- ✓ Short Term – Trolley / Long Term – Olli
- ✓ Bicycling (Dedicated Facilities & Bike Share)
- ✓ Ride-Share Subsidy
- ✓ App-Based Parking Occupancy Sensors
- ✓ Metered Spaces