

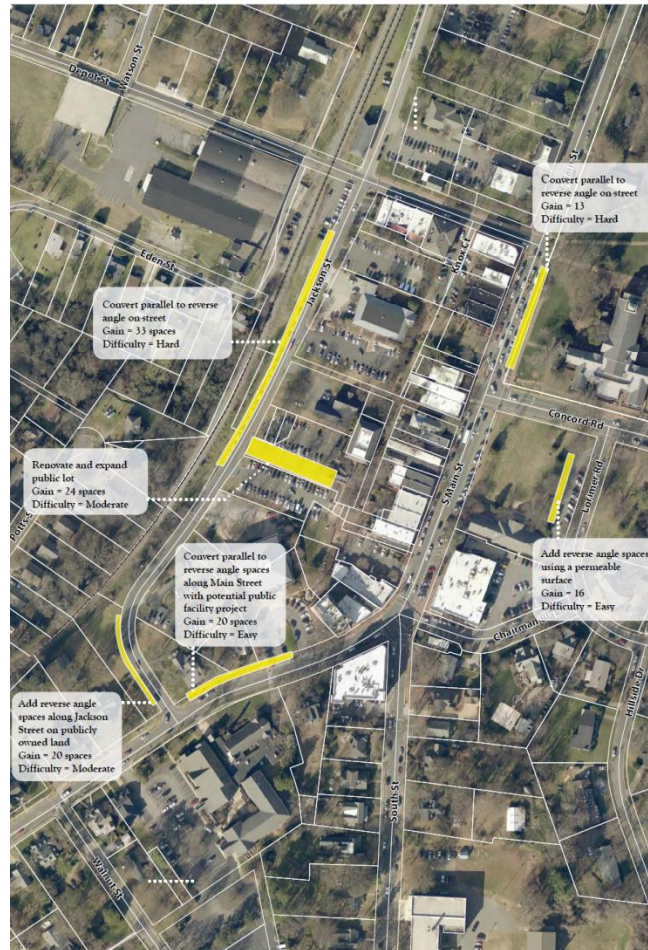
# Downtown Parking

**Kim Fleming**  
**Economic Development Manager**  
**September 26, 2017**

# Downtown Parking

- **Met with downtown businesses to determine parking challenges/solutions**
- **Reviewed parking study from the spring**
- **Asked for feedback and to establish priorities**

# Downtown Parking



# Downtown Parking Findings

- **Identified 2 areas that are priorities**
- **Employees have difficulty finding all-day parking spaces**
- **Businesses hear from customers that they would like to spend more than 2 hours downtown**

# Downtown Parking Findings

- **Businesses not averse to metered parking (on a trial basis)**
- **Retail businesses stressed the need for 2-hour parking close to their stores**

# Downtown Parking Solutions

- **Employee all-day parking areas**
- **The anti-ticket**
- **Designated delivery areas (north and south)**
- **New parking maps**

# Downtown Parking Solutions

- **Parking map on businesses websites**
- **Better signage for shared parking agreements (especially churches)**
- **Improved lighting**
- **Cooperation**

