

CATS Transit Planning Update

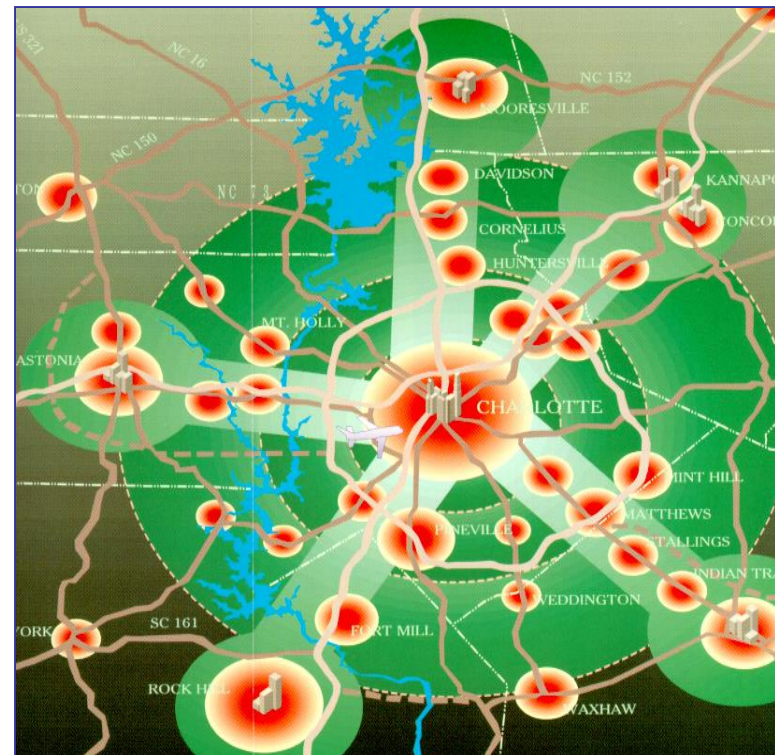


Photo Credit: <http://my.davidson.edu/2017/03/davidson-small-town-with-a-lot-to-offer/#prettyPhoto>

Davidson Town Board
October 10, 2017

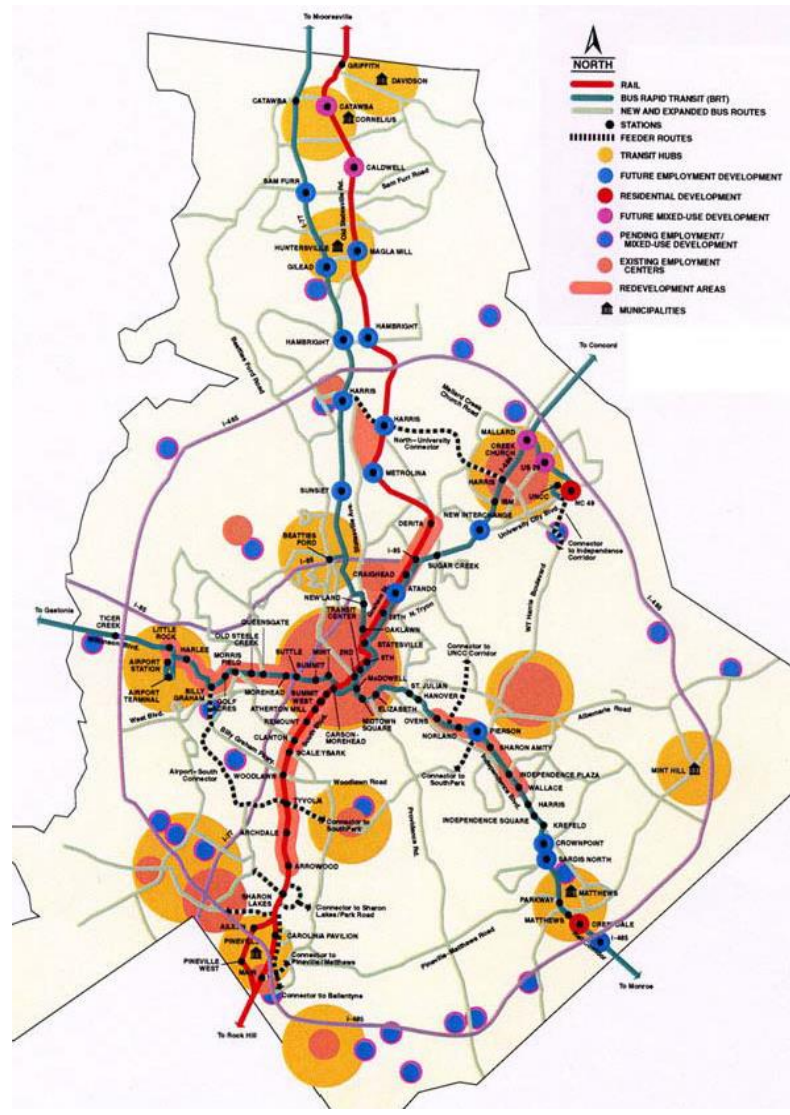
Centers and Corridors Strategy developed in the 1990's

- Long-term growth management strategies for Charlotte-Mecklenburg
- Five primary transportation and development corridors
- Transform unfocused development patterns in corridors and wedges to compact mixed-use development along corridors and in station areas

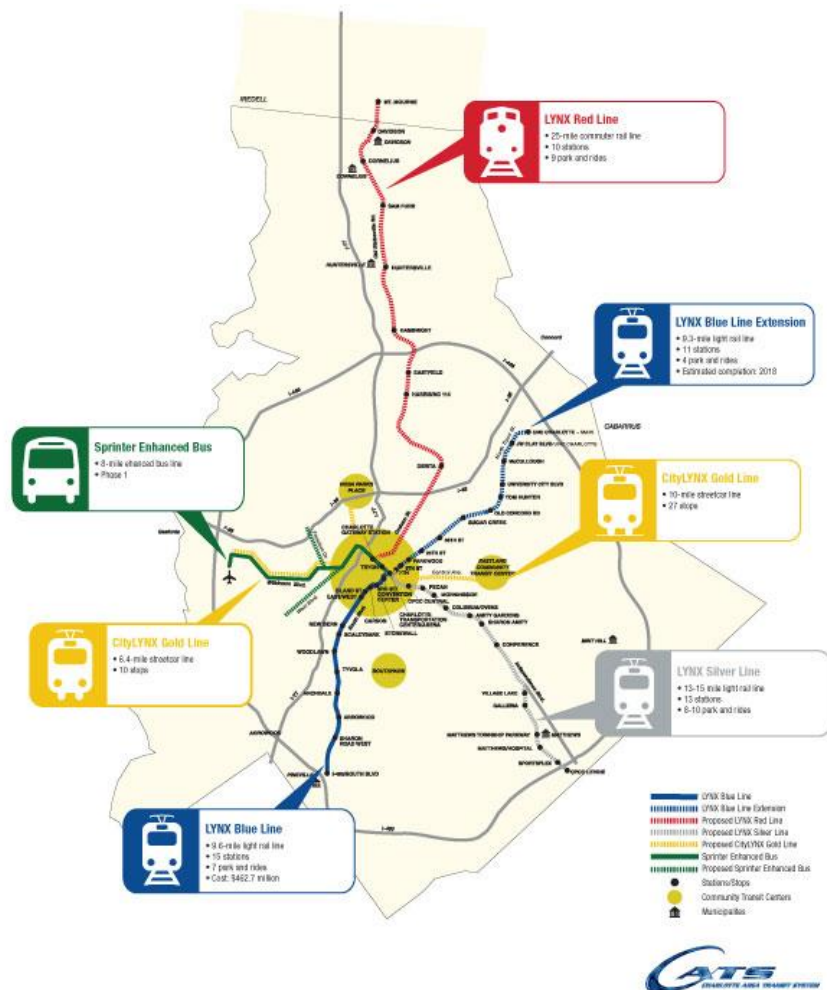


2025 Transit / Land Use Plan

- Vision for a long-term growth management strategy for Charlotte-Mecklenburg
- Integrates rapid transit and mixed-used development along 5 transportation corridors
- Expands transit system to serve between the rapid transit corridors
- Provide more transportation choices to meet mobility needs
- Support sustainable growth for region



LYNX SYSTEM MAP



Operating

- LYNX Blue Line Light Rail
- Sprinter Airport Enhanced Bus
- CityLYNX Gold Line Phase 1

Under Construction

- LYNX Blue Line Extension
- CityLYNX Gold Line Phase 2

Under Design

- Charlotte Gateway Station

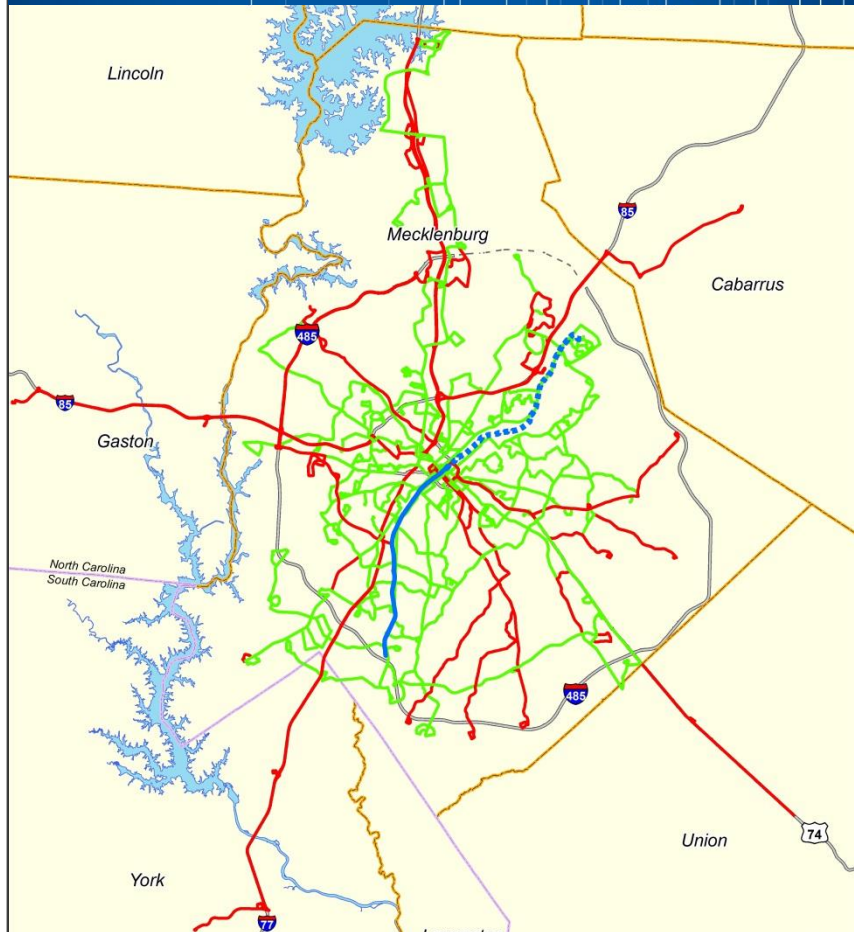
Recently Approved

- LYNX Silver Line Light Rail Adopted by MTC in November 2016

Under Study

- LYNX Red Line
- LYNX West Corridor
- LYNX Silver Line Center City
- System Integration

ENVISION MY RIDE

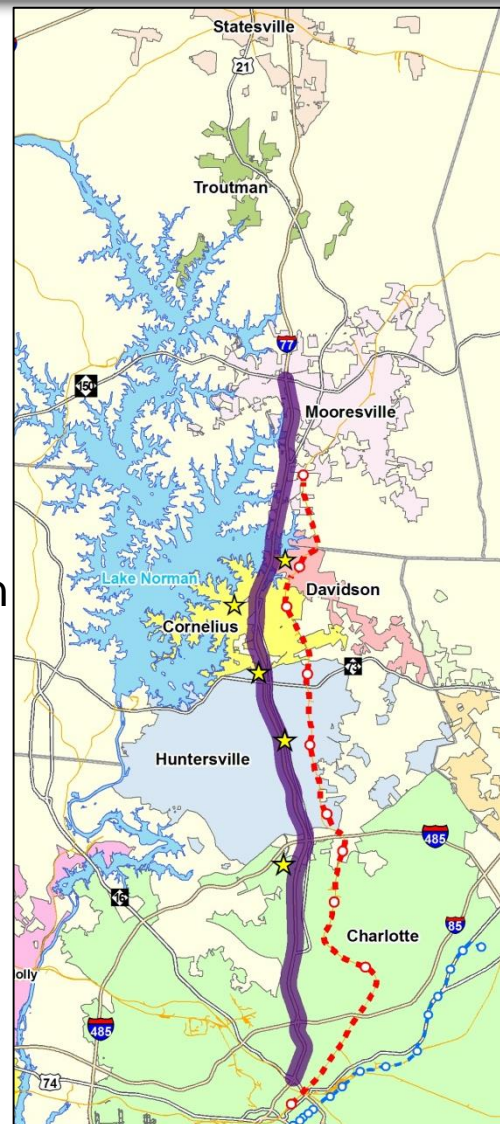


Envision My Ride is a new initiative to redesign CATS entire current bus system. The study will analyze bus route structure and frequency to determine how to improve the system and better serve the Charlotte region. Below are the overall goals of this study.

- Cross-town and suburb-to-suburb bus service
- Connections between different bus routes and between bus and light rail
- Frequency of service
- More direct services

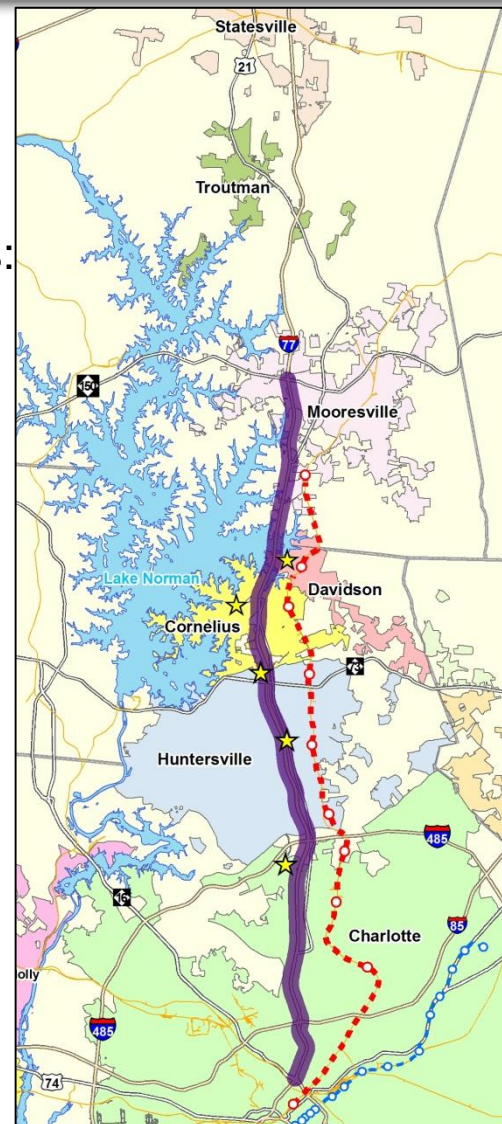
Overview:

- Focused mobility study along the I-77 North Corridor to determine express bus route recommendations for the I-77 Express Lanes
- Project team meet monthly and included staff from CATS, Huntersville, Cornelius, Davidson, Mooresville, Troutman, Statesville, and iCATS.
- Project team developed draft express route recommendations in March 2017.
- Express route recommendations will be incorporated into the Envision My Ride study
- Public engagement will be coordinated with the Envision My Ride study
- Final staff recommendations will be complete by Summer 2017



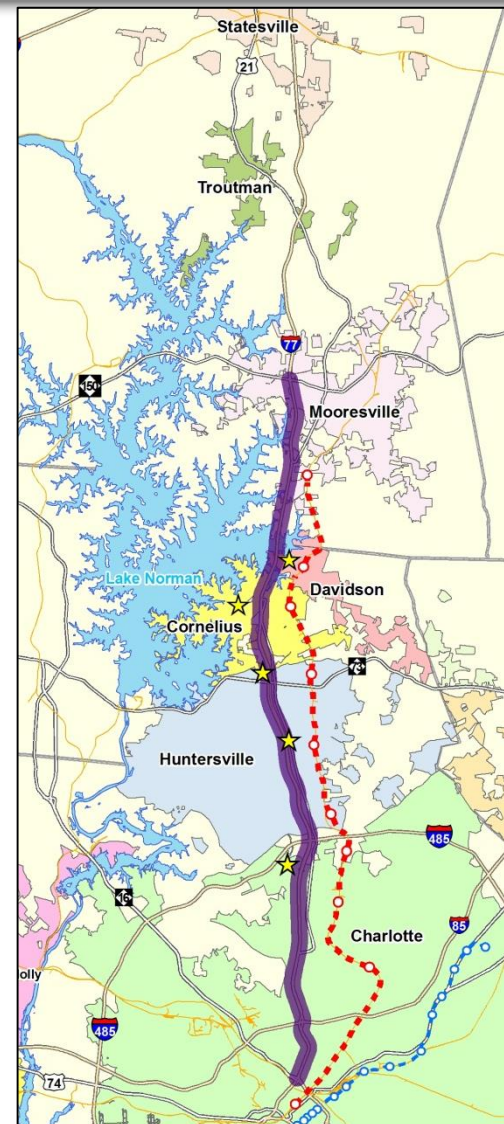
Goals:

- Leverage express lanes at 2018 opening
- By Summer 2017 develop two express route network scenarios:
 - Find efficiencies and improvements within the current service levels
 - Aspirational network that increases coverage area and service levels
- Coordinate route planning with developers and towns.
- Develop Park and Ride recommendations to maximize use of Direct Connects.
- Expand travel market.
- Work with Iredell county and iCATS to implement regional express route.
- Identify bus stop capital needs.



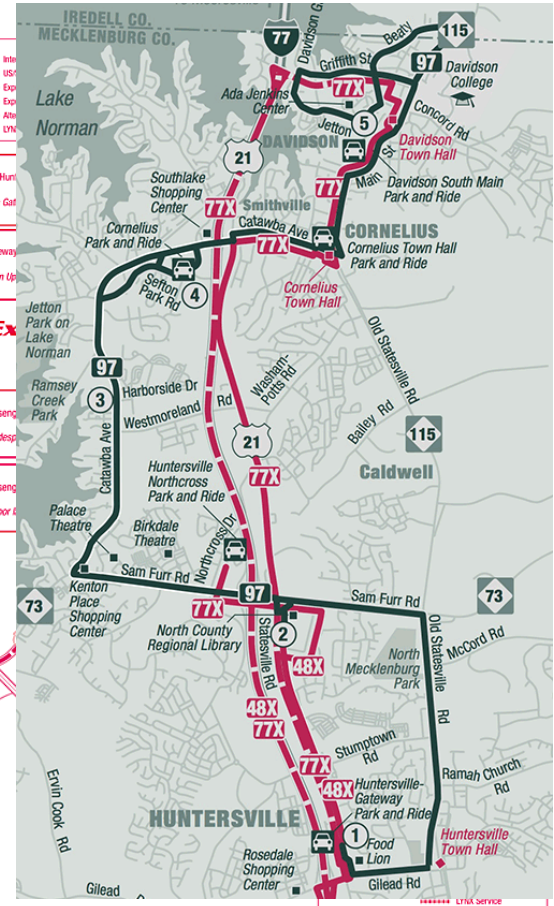
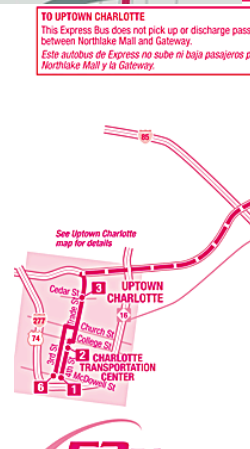
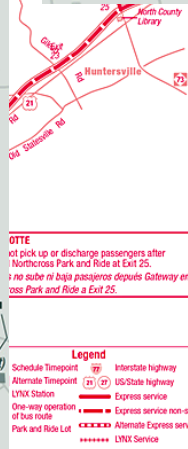
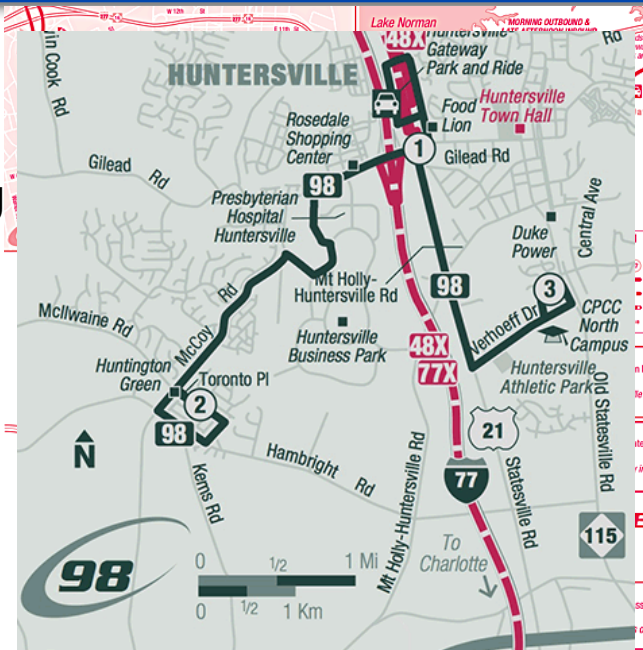
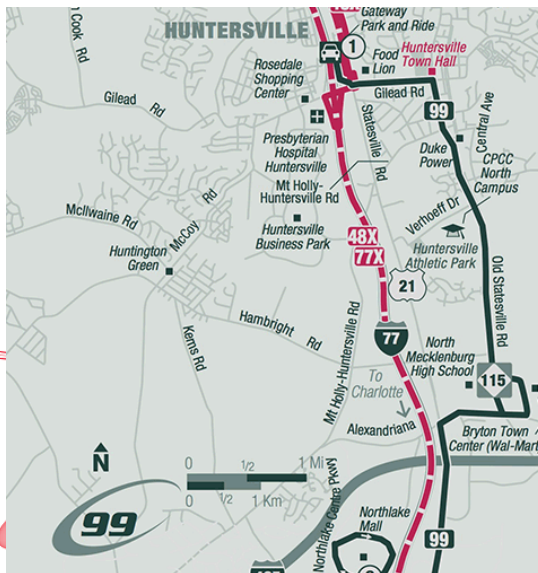
Project Team Initial Findings:

- Rapid development is occurring throughout the study area.
- Expanded service is needed to increase ridership.
- Opportunities exist to incorporate new Park and Rides into new and existing development projects.
- Employment centers would benefit from more reverse commute service.
- More mobility options between the towns is desired.
- Regional vanpool service and express routes are in the early stages of development.
- Bus stop amenity improvement needs to be developed.



Existing:

- Express
 - 77x North Mecklenburg
 - 48x Huntersville
 - 53x Northlake
- Village Rider
 - 97 Cornelius
 - 98 McCoy Road
 - 99 Huntersville



53x Northlake Express

Recent improvements:

February 2017

- Trips were added to express routes 48X, 53X, and 77X to mitigate construction of the I-77 Express Lanes

June 2017

- Route 48x was restructured to serve the new Cornelius PNR.

October 2017

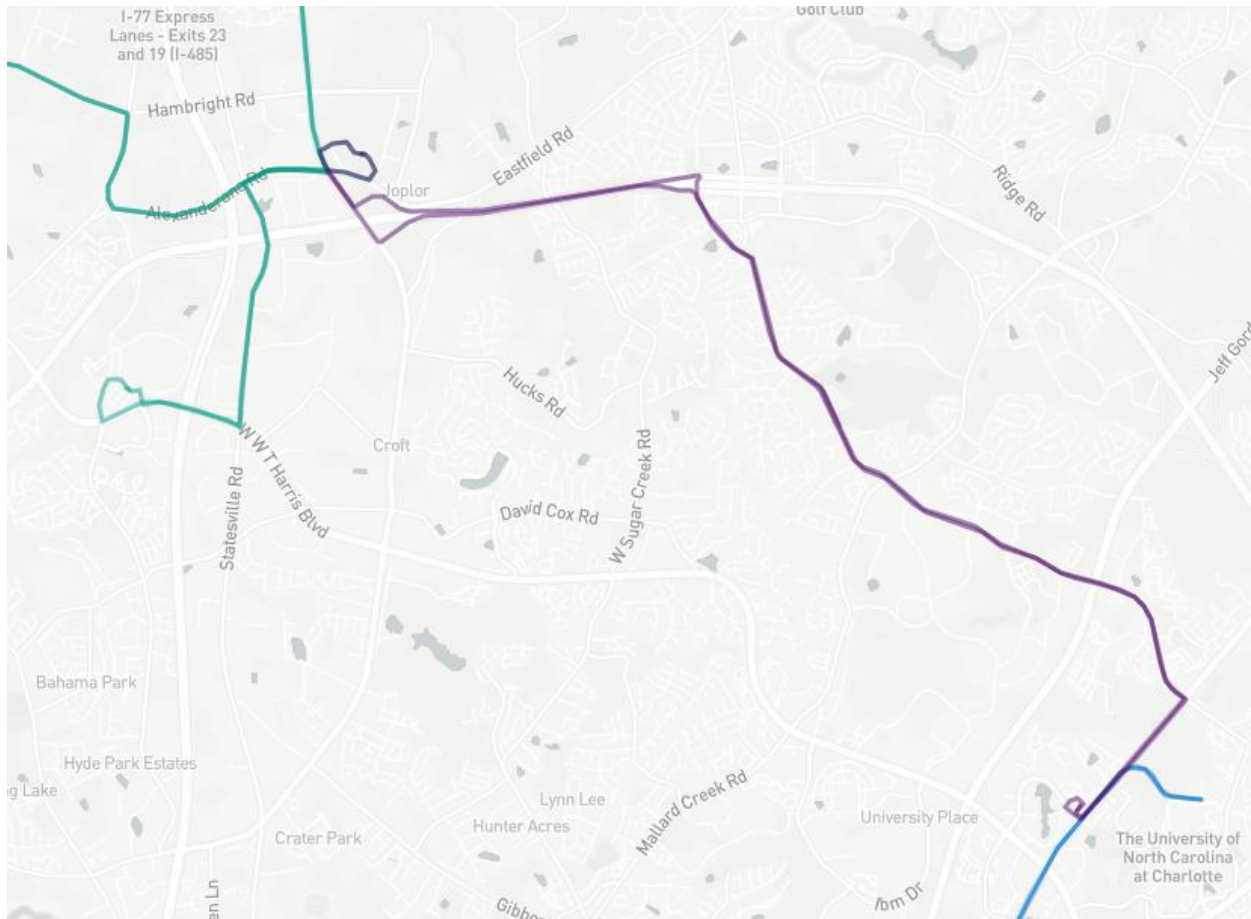
- Reverse 48X commute service will be added US-21 between Exits 23 and 28.



Near term improvements:

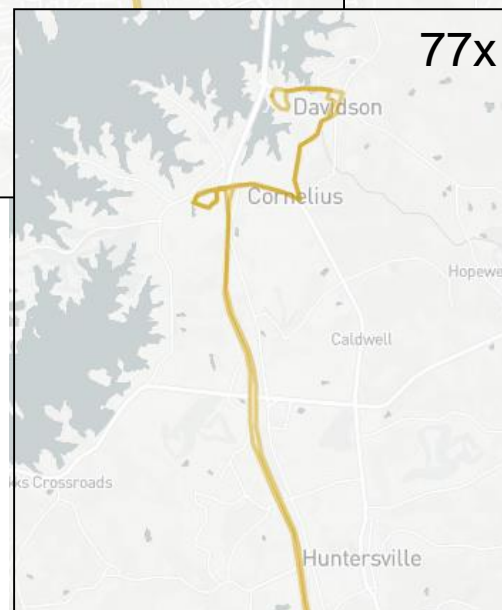
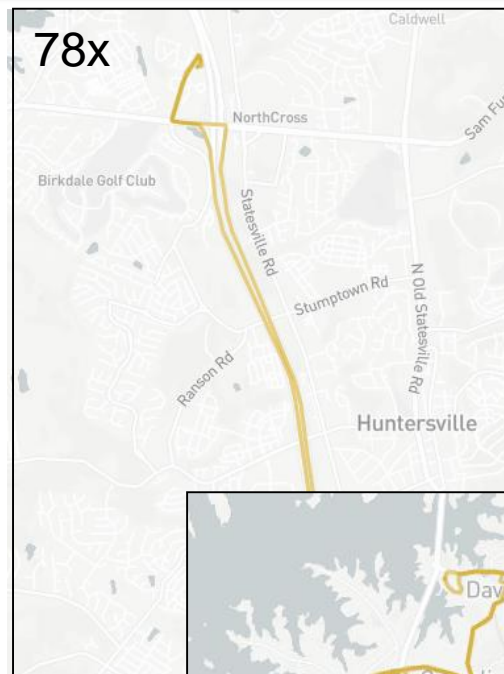
LYNX BLE revenue service

- New service called North Meck Connector will start service between Bryton and the JW Clay Blvd / UNC Charlotte LYNX BLE station
- Village Riders will be restructured to provide better transfer to express routes and the North Meck Connector



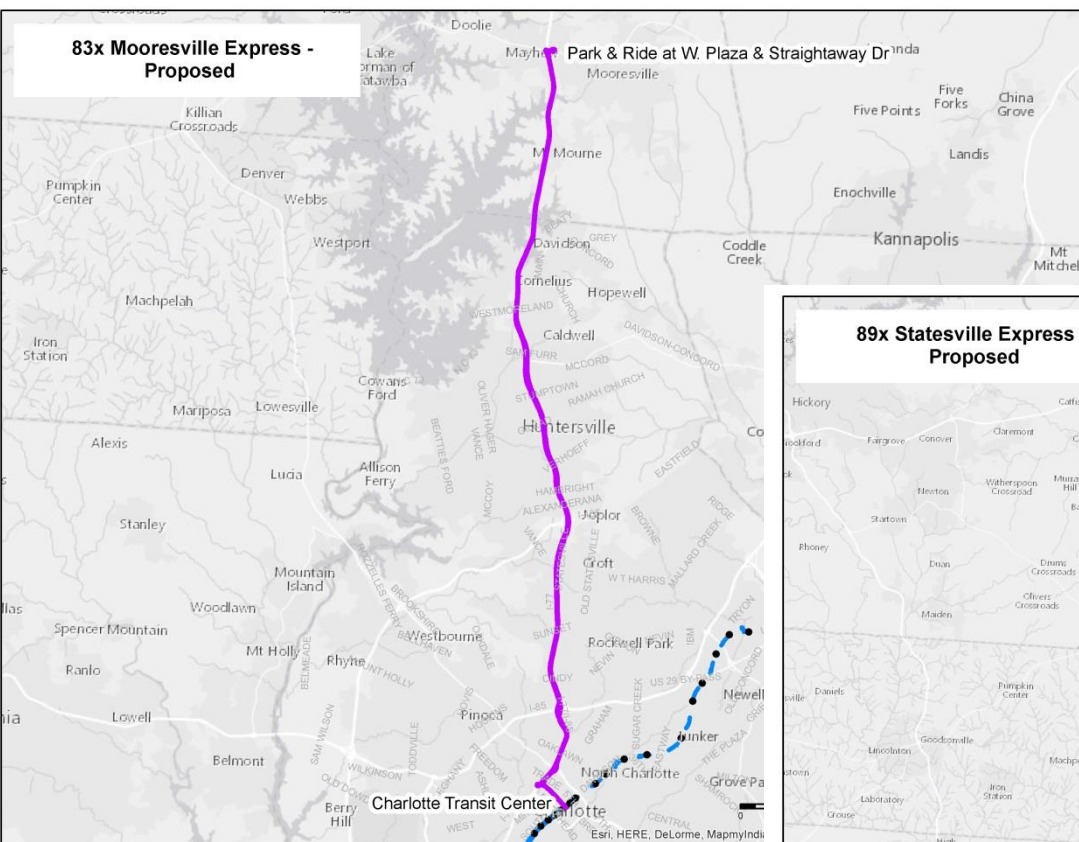
Service recommendations when Express Lanes open:

- Park and ride direct service
 - Northlake Mall
 - Huntersville Gateway
 - Huntersville Northcross
 - Cornelius
- Direct connects at Hambright and Lakeview will be used to improve travel time reliability.
- A new express route 78x is proposed to service Huntersville Northcross

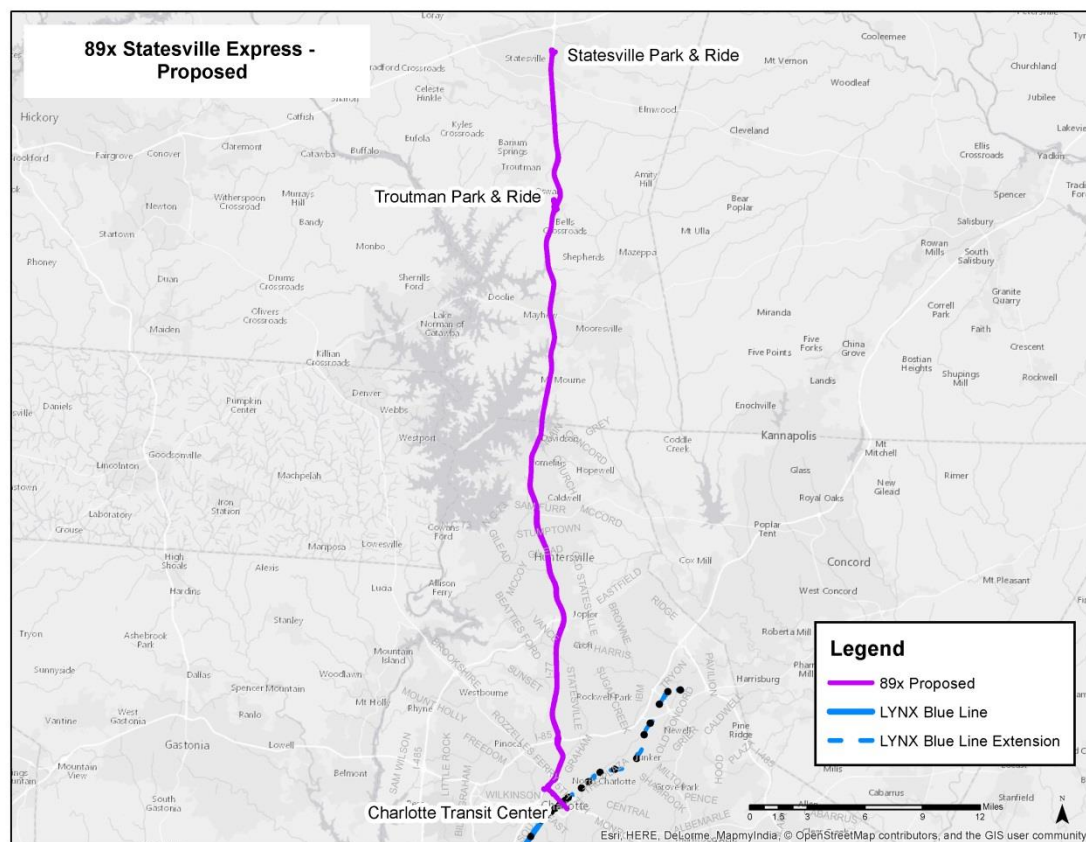


Express Route concepts developed for Iredell County

83x Mooresville Express - Proposed



89x Statesville Express - Proposed

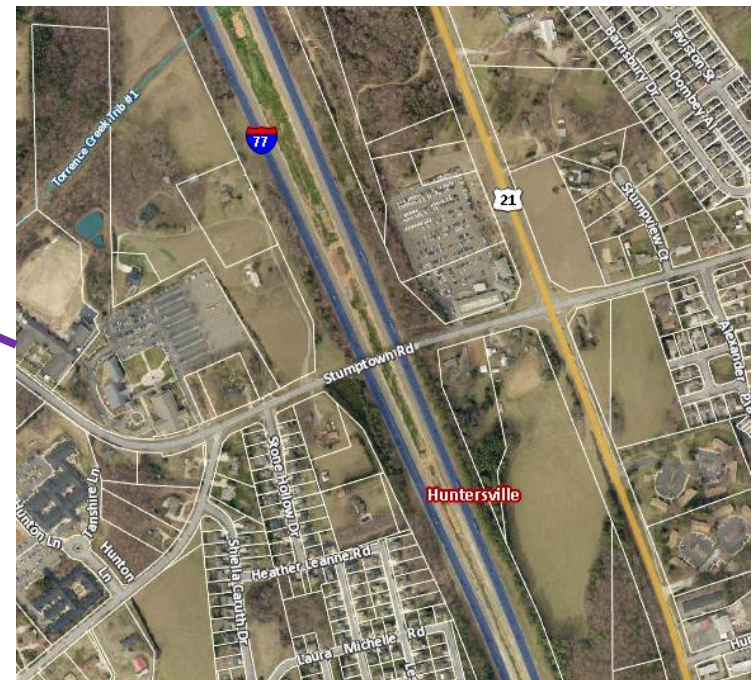
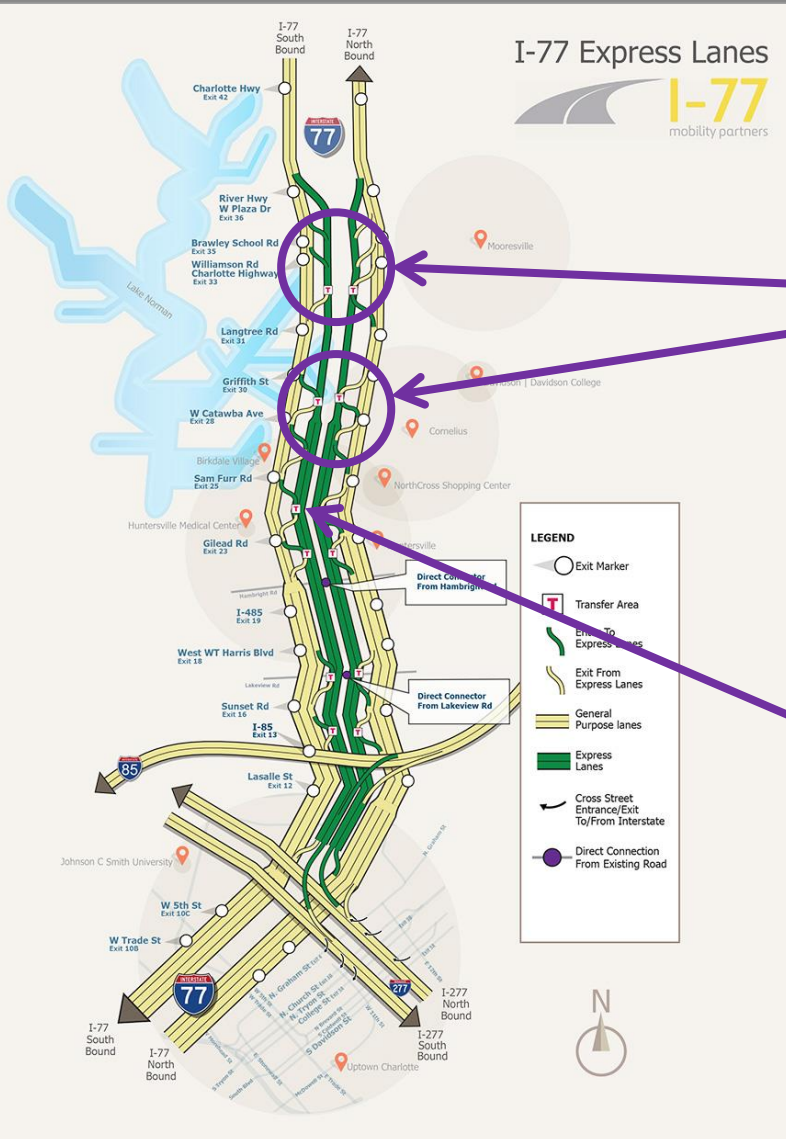


Potential routes as well as Park and Rides will be coordinated with iCATS.



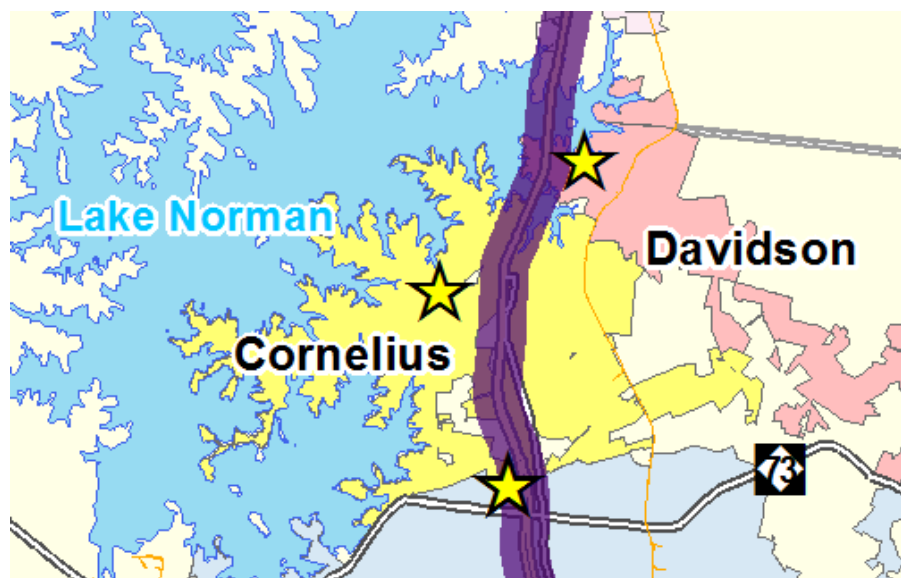
Study Recommendations

- Stumptown Road
- Continue to explore proposed future locations in Cornelius, Davidson, and Mooresville.

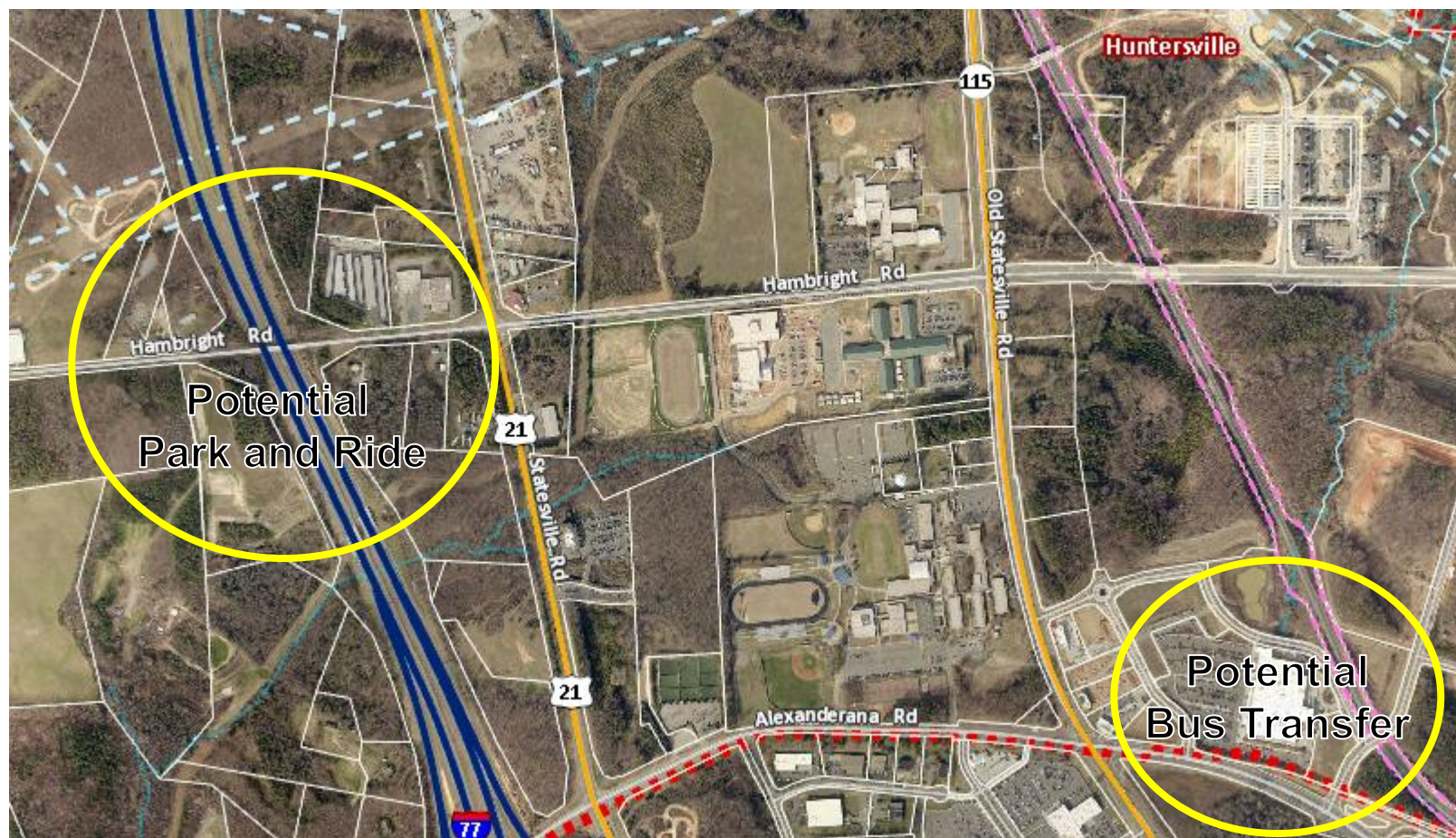


Existing:

- Northlake Mall
- Huntersville Gateway
- Huntersville Northcross
- Cornelius
- Davidson Gateway





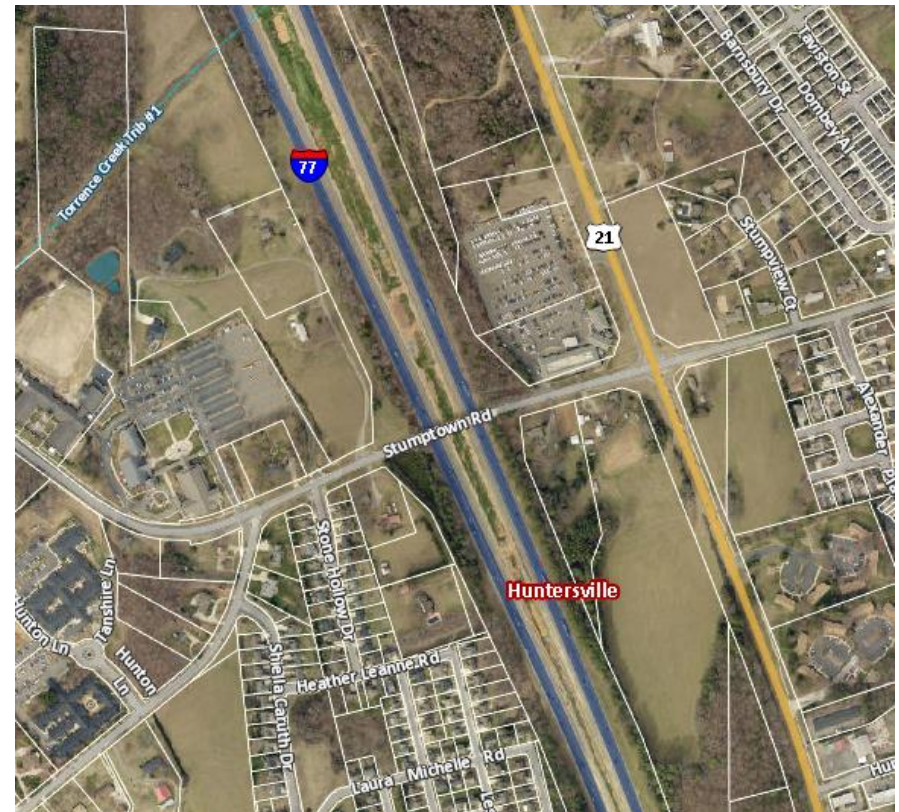


Study Recommendations

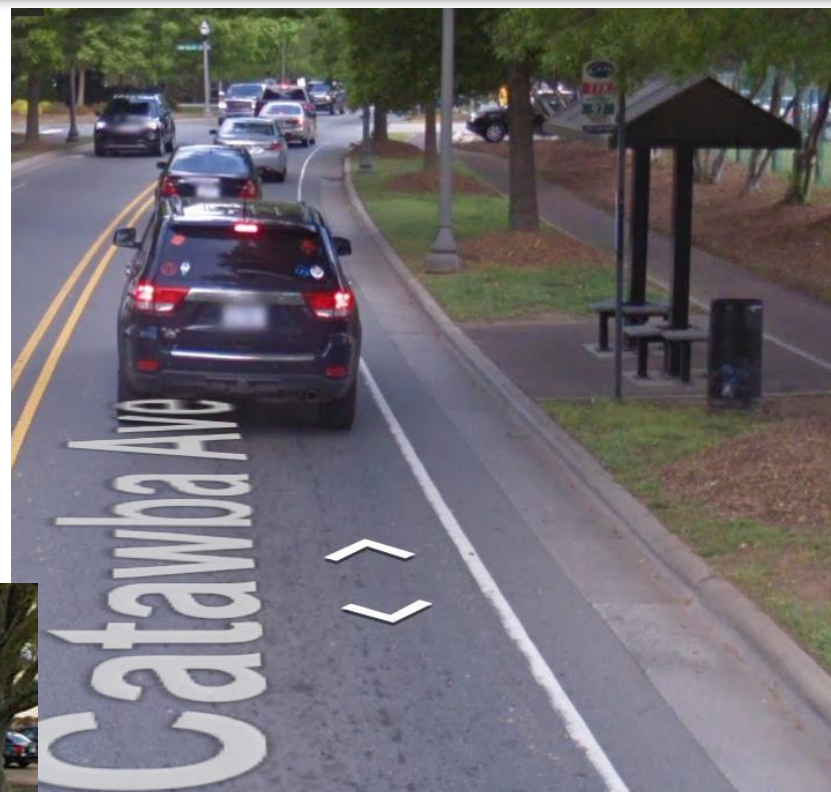
- Investigate sites near Hambright Direct Connect
- Potential transfer location at Bryton

Study Recommendations

- Utility right of way
- Near proposed future Direct Connect
- Partner with iCATS on a shared facility

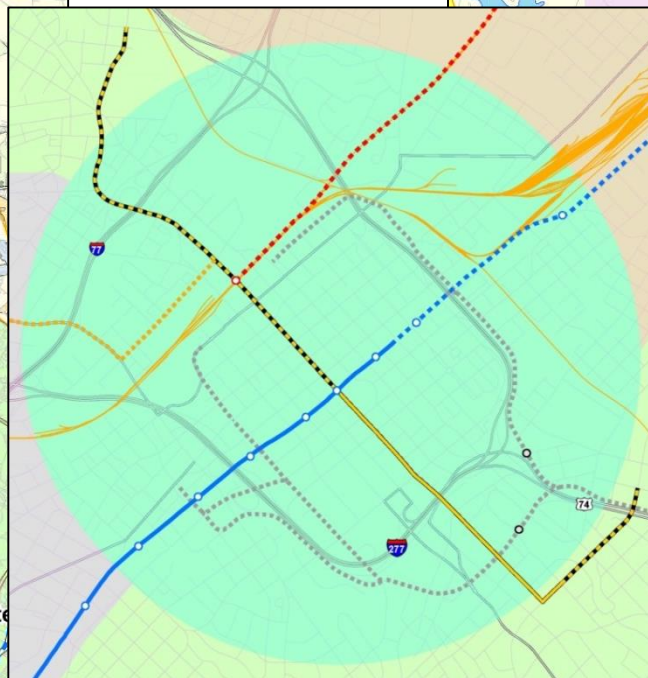
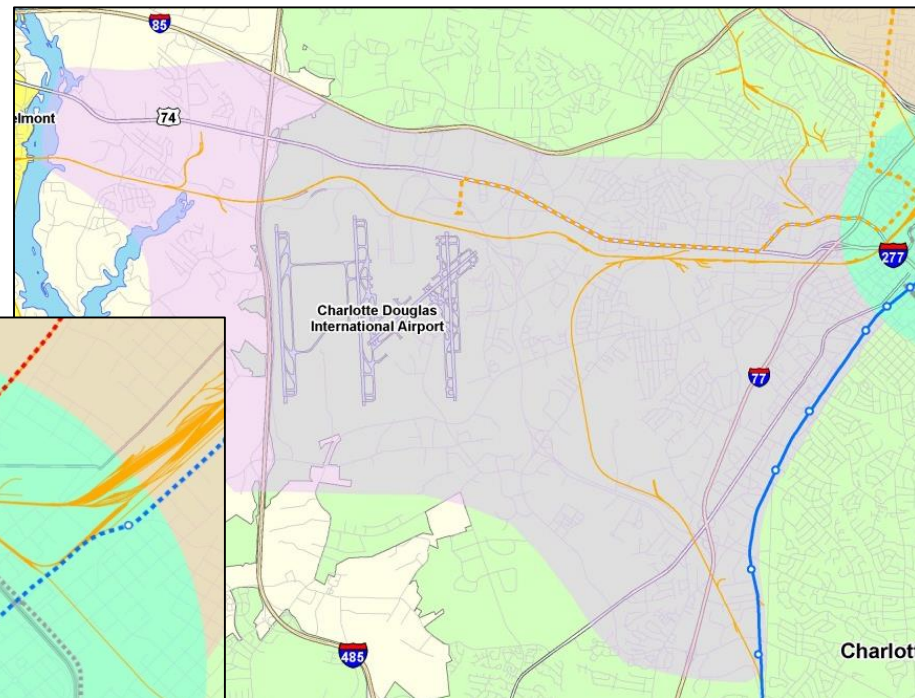


- CATS is leading a multi jurisdictional effort to identify bus stop amenity needs
- Recommendations will be included in the North Corridor Mobility Study and Envision My Ride





- Draft Document under project team review
- Incorporate recommendations into Envision My Ride



- Public Engagement begins in October 2017
- Complete with updated rapid transit staff recommendations to the MTC by December 2018

Technologies Previously Considered

BUS RAPID TRANSIT



- Intended for a variety of trips from regional to local
- Operates in a variety of ROW scenarios
- Service throughout the day and on weekends

STREETCAR



- Intended for short-distance trips in urban areas
- Typically operates in mixed traffic
- Service throughout the day and on weekends

LIGHT RAIL



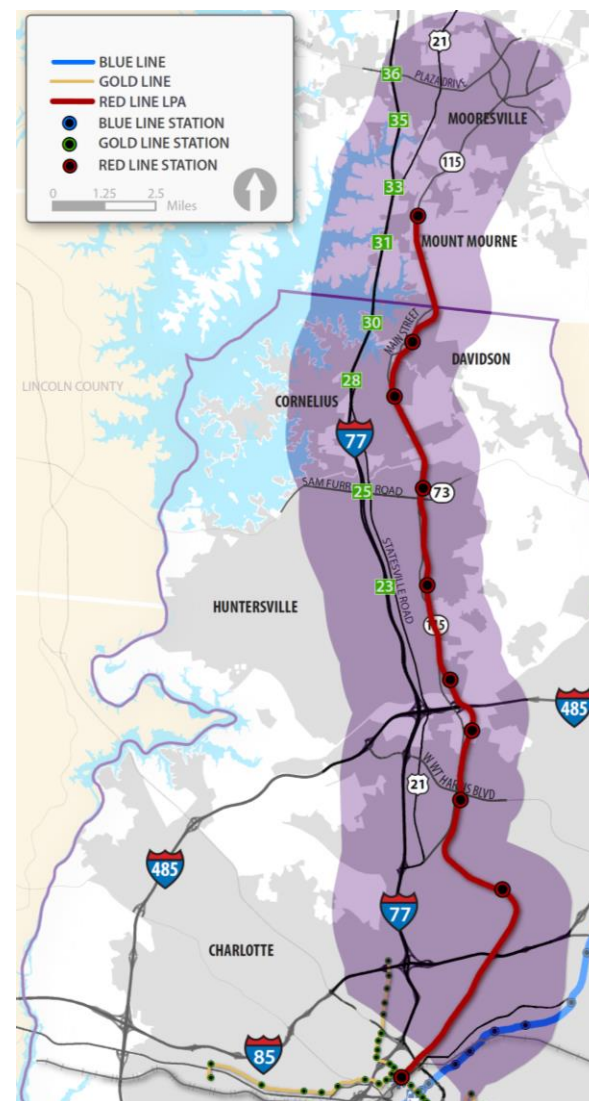
- Intended for a variety of trips from regional to local
- Typically operates in dedicated ROW
- Service throughout the day and on weekends

COMMUTER RAIL

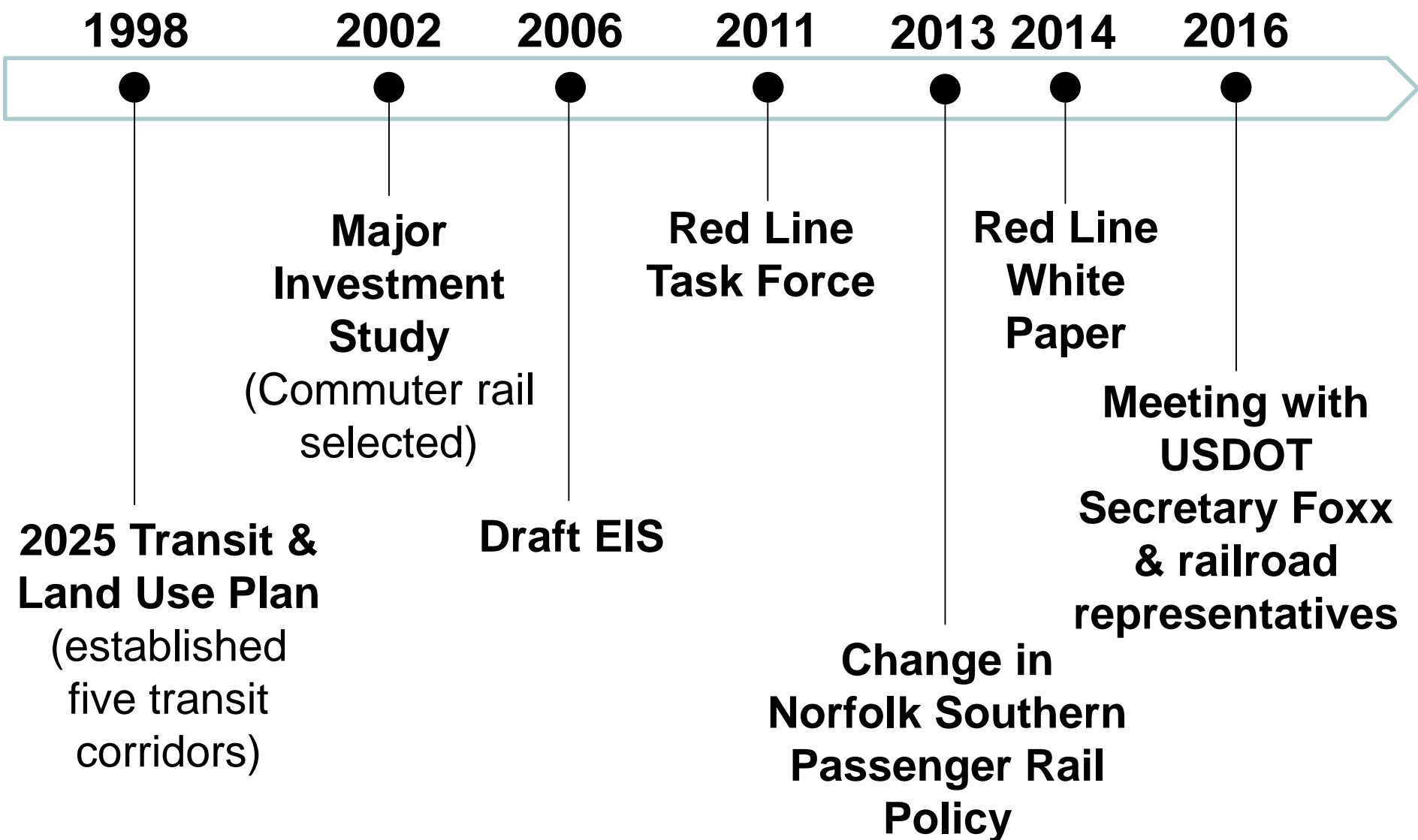


- Intended for longer-distance commute trips from suburbs into a central city
- Operates in dedicated ROW
- Service during peak hours of travel M-F

- **Current proposal:**
LYNX Red Line Commuter Rail
 - Utilizes existing tracks owned by Norfolk Southern (NS) from south of Mooresville to uptown Charlotte
 - Strong downtown land use connection in Mooresville, Davidson, Cornelius, and Huntersville
 - Takes advantage of existing infrastructure to manage costs
 - Intended to terminate at multimodal Charlotte Gateway Station
- **Current Status**
 - NS remains opposed to passenger rail on their tracks
 - Peak and limited midday service only



LYNX Red Line Planning Timeline



What is the “O” Line?

- The Norfolk Southern (NS) “O” Line is a single-track through Huntersville, Cornelius, Davidson, and Mooresville
- Currently utilized for low-volume freight



This study is:



- Public engagement to reach consensus on updated rapid transit vision
- A definition of rapid transit service and alignments
- Information to be considered in future system timing and implementation

This Study Is NOT:



- Intended to identify a “shovel ready” rail project”
- A fully detailed and designed rail project
- Constrained by current CATS financial projections

What is the Purpose of this Study?

Conduct land use, transportation analyses, and public engagement to support the selection by the MTC of updated Locally Preferred Alternatives for the LYNX Red Line and West Corridors



To update the 2030 Transit System Plan by determining how the corridors are integrated



Define strategies to move forward with implementation

**Tuesday,
October 17
6:00 pm – 8:00 pm
Cornelius Town Hall**

**Thursday,
October 19
6:00 pm – 8:00 pm
Camp North End
Charlotte**

**Tuesday,
October 24
6:00 pm – 8:00 pm
Lee S. Dukes Water
Treatment Plant
Huntersville**

**Thursday,
November 9
6:00 pm – 8:00 pm
Charles Mack
Citizen Center
 Mooresville**

**Wednesday,
November 15
11:30 am – 1:00 pm
CharMeck Library
Uptown Charlotte**

**Thursday,
November 16
6:00 pm – 8:00 pm
Mecklenburg County
Bar Association
Charlotte**