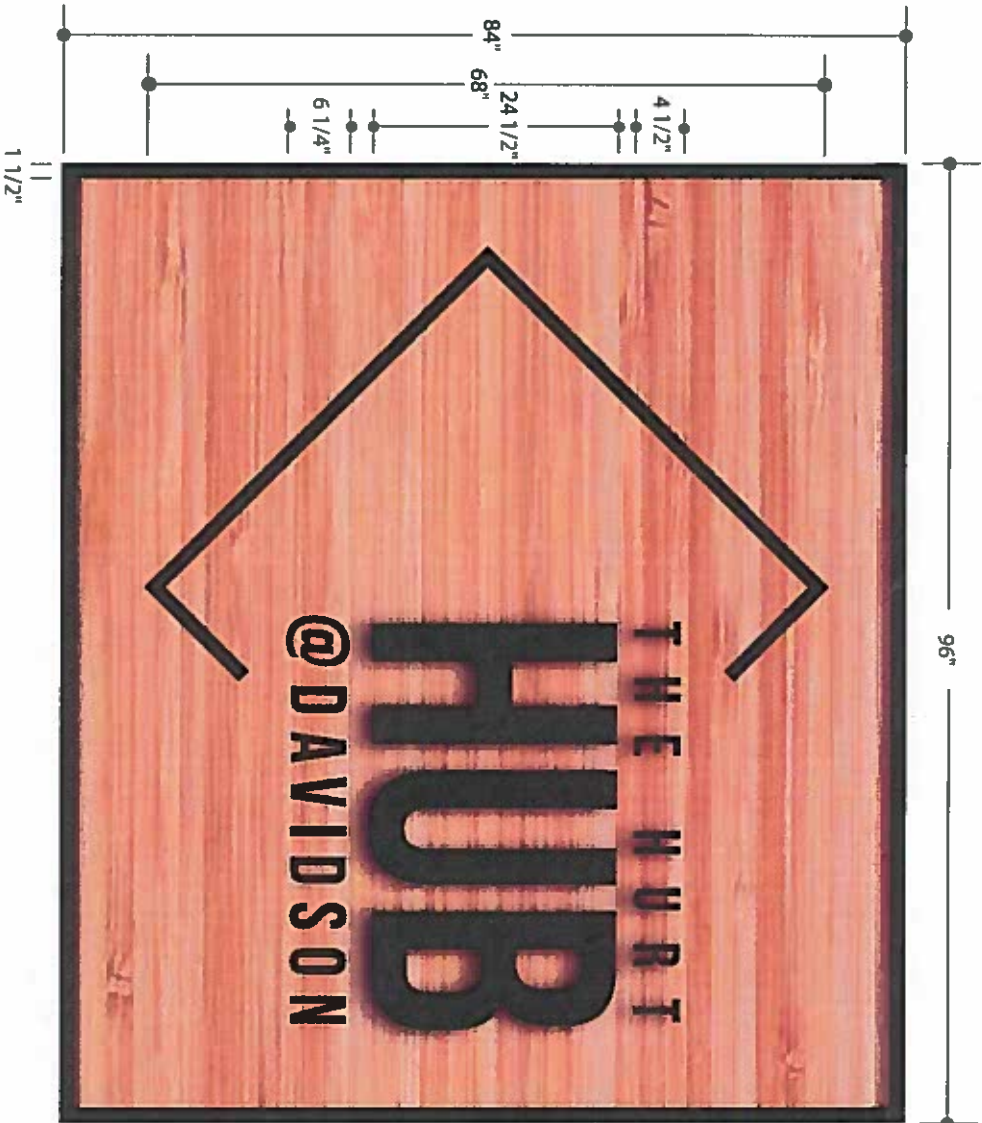
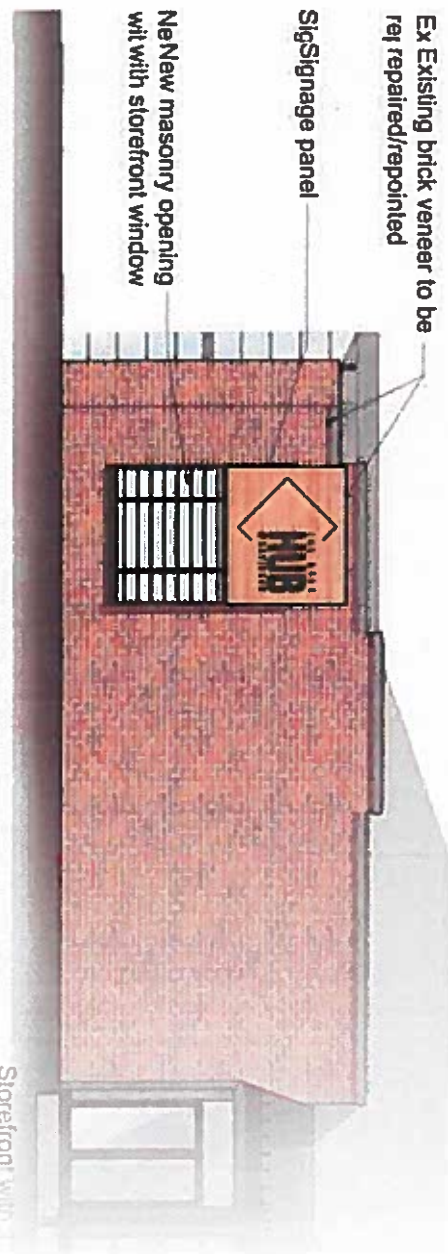
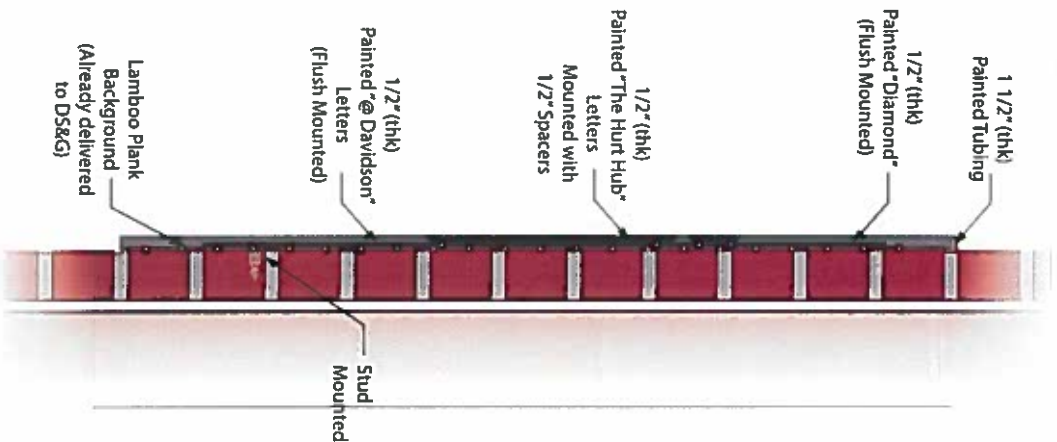


CONCEPT Sign 1 - Building Signage

Qty: 1
Painted Dimensional Letters / Painted Tubing / Flush Mounted
Scale: 1/2" = 1'



Side View
Scale: NTS



DATE:

7/10/18

REVISION DATE:

JOB LOCATION:

Davidson, NC

CONTACT:

Stoney

DRAWING:

The Hub

DESIGNER:

Nate

ILLUMINATING ELECTRIC SIGN
LABORATORY • ESTABLISHED 1974

ELECTRICAL ELEMENTS TO BE INSTALLED
IN ACCORDANCE WITH THE REQUIREMENTS OF
ARTICLE 600

OR THE NATIONAL ELECTRICAL CODE AND/OR
LOCAL AMERICAN NATIONAL STANDARDS FOR
PROPER INSTALLATION AND MAINTENANCE OF THIS SIGN

THE CONTENTS OF THIS DRAWING AND ALL
ELEMENTS ARE NOT TO BE REPRODUCED,
CHANGED, OR EXHIBITED TO ANYONE
OUTSIDE OF YOUR COMPANY IN WHOLE
OR IN PART WITHOUT WRITTEN PERMISSION.
ALL SUCH ACTIONS ARE PROHIBITED BY LAW.

© 2018 ILLUMINATING

ELECTRICAL 120 VOLTS, 60 HERTZ, 1/2" (thk)

This sign is constructed to be suitable for
the following environmental condition:

Wet Deep Dry

STOP PLEASE NOTE

This Drawing must be returned
signed and approved. Any delay will
result in a stop order. We do not
accept any responsibility for errors
of any kind. Please inspect this
drawing thoroughly to insure
that all spelling is correct and that
the drawing is accurate and correct.

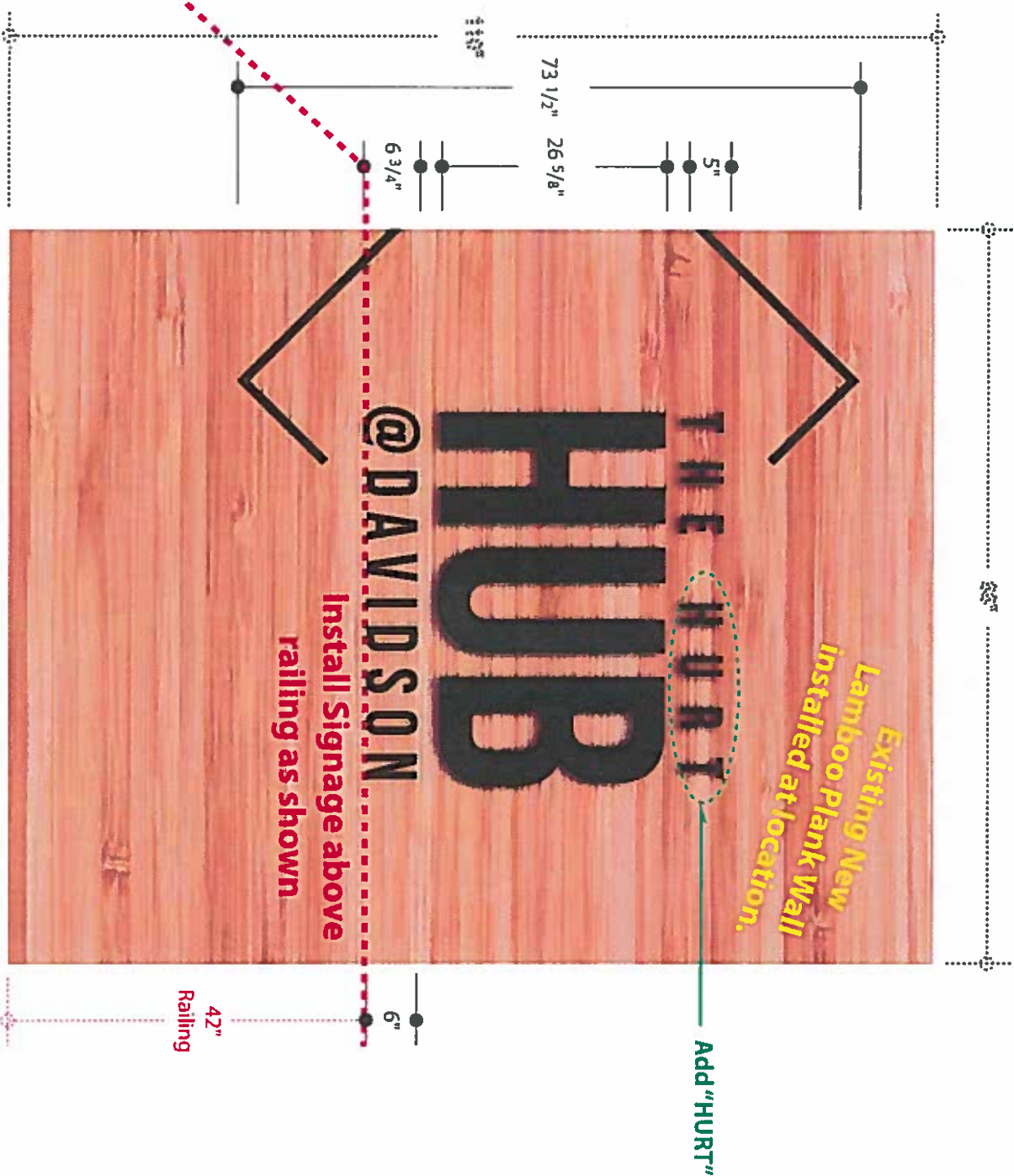
PAGES:

CONCEPT Sign 2 - Building Signage

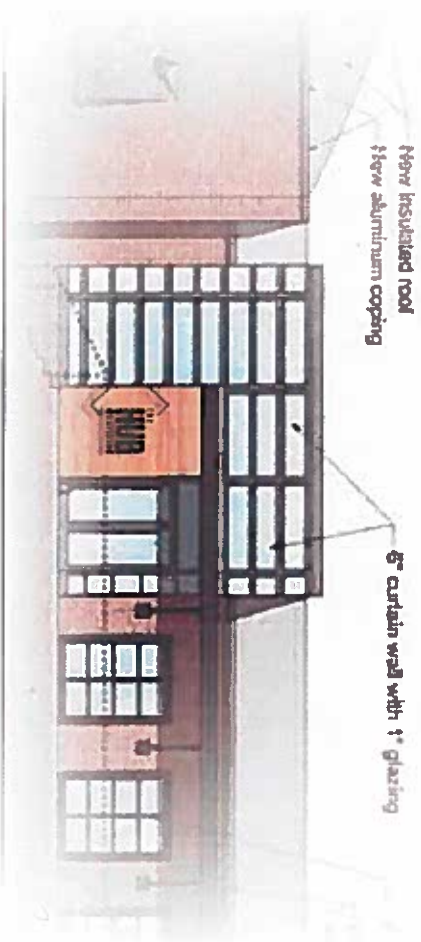
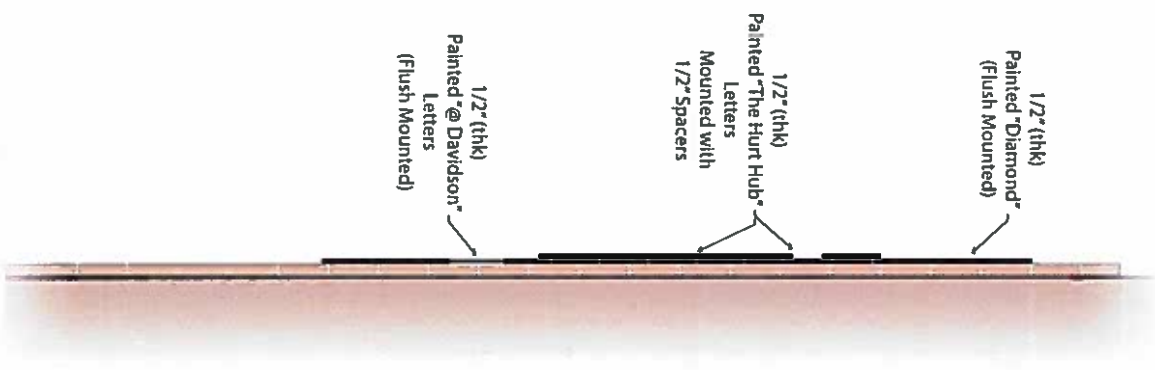
Qty: 1

Painted Dimensional Letters / Spacers / Mount to New Lamboo Plank Wall

Scale: 1/2" = 1'



Side View
Scale: NTS



Specifications:

"THE HURT HUB": 1/2" (thk) Aluminum / Mount with 1/2" Spacers - Paint MP Black

"@ DAVIDSON": 1/2" (thk) Aluminum / Flush Mounted - Paint MP Black

"DIAMOND": 1/2" (thk) Aluminum / Flush Mounted - Paint MP Black

MOUNT: XXXXX

Stud Mount with Typical Appropriate Hardware as Required to Secure all Elements

(PRINTED COLORS ARE FOR CONCEPTUAL USE ONLY. ACTUAL COLORS TO BE CONFIRMED PRIOR TO FABRICATION)

DATE:

7/10/18

REVISION DATE:

JOB LOCATION:

Davidson, NC

CONTACT:

Stoney

DRAWING:

The Hub

DESIGNER:

Nate

WARNING: ELECTRIC SIGN
Lampwork Inc. 100-111 to 11-11

ELECTRICAL ELEMENTS TO BE INSTALLED
IN ACCORDANCE WITH THE REQUIREMENTS OF

ARTICLE 600

OF THE NATIONAL ELECTRICAL CODE AND ON
OTHER APPLICABLE LOCAL, STATE AND FEDERAL
REGULATIONS AND DOING OF THE JOB

THE CONTENTS OF THIS DRAWING AND ALL
ELEMENTS ARE NOT TO BE REPRODUCED
CHANGED, OR EXHIBITED TO ANYONE
OUTSIDE OF YOUR COMPANY IN WHOLE
OR IN PART WITHOUT WRITTEN PERMISSION
ALL SUCH ACTIONS ARE PROHIBITED BY LAW

©2018 ALL RIGHTS RESERVED

ALUMINUM IS AT 120 VOLTS (SEE OTHER DRAWING)

This sign is constructed to be suitable for
the following environmental condition:

Wet Damp Dry

STOP PLEASE NOTE

This Drawing must be returned
signed and approved, any delay will
be charged to the client. We DO NOT
assume any liability for errors of any kind. Please inspect
this drawing thoroughly to ensure
that all spacing is correct and that
the drawing is accurate and correctly
positioned.

PAGES:

2 of 4