

# North-South Parkway Sub-Area Study

## Advisory Committee Meeting

*August 21, 2018*

*1:00 – 2:30PM*

*Town Operations Center  
Ready Room A  
Mooreville, NC*

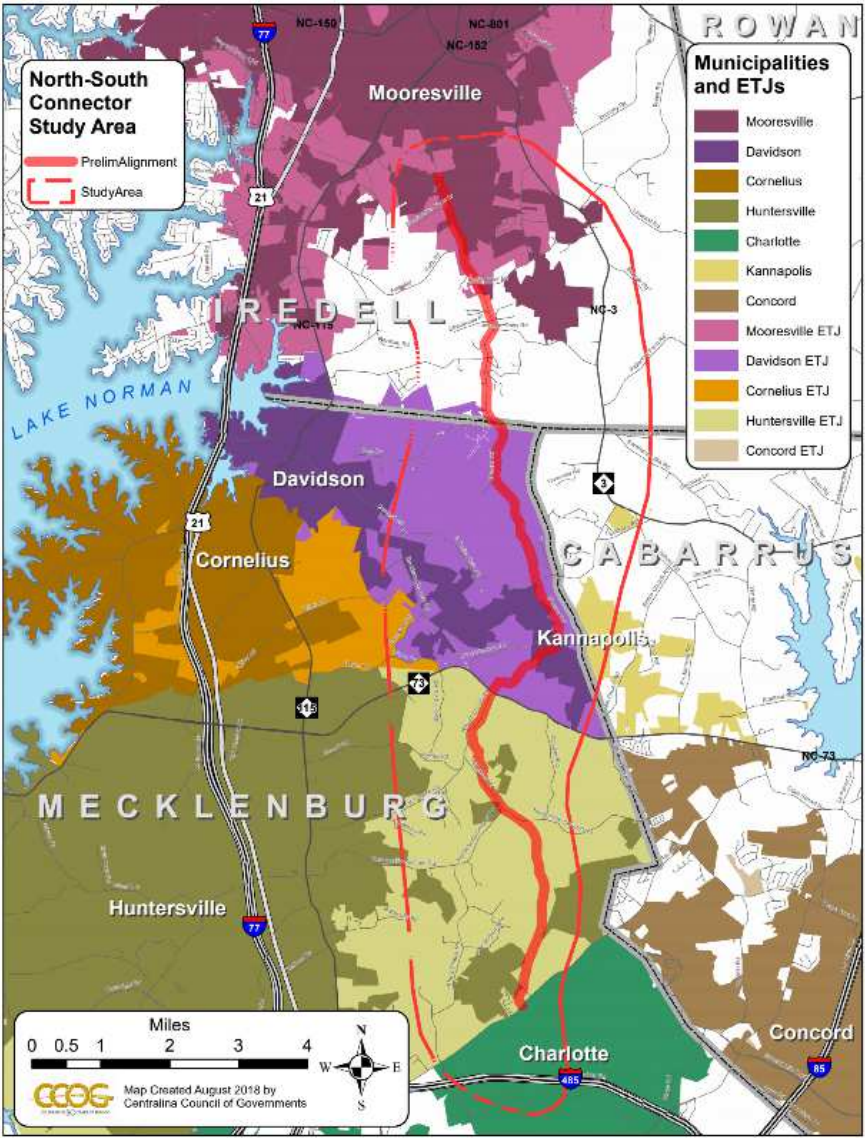


G R E S H A M  
S M I T H   A N D  
P A R T N E R S

# Agenda

- I. Introduction & Review Agenda
- II. Project Website
- III. Base Mapping
- IV. Open Houses
  - Advertising the Open Houses
  - Location and logistics
  - Pop-Up Events
  - MetroQuest Survey review
- V. Communications Plan
- VI. Other Business

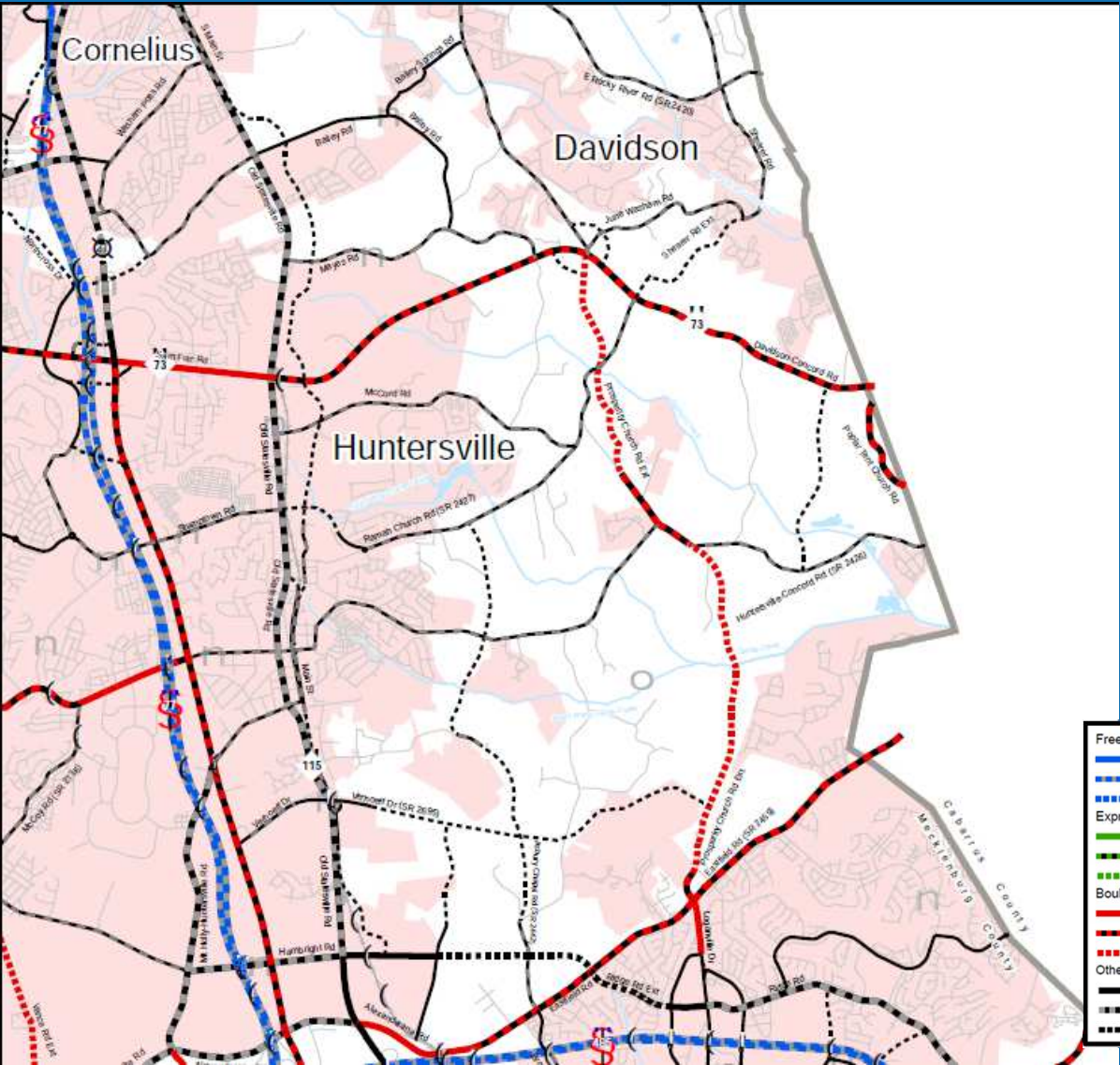
# Study Area







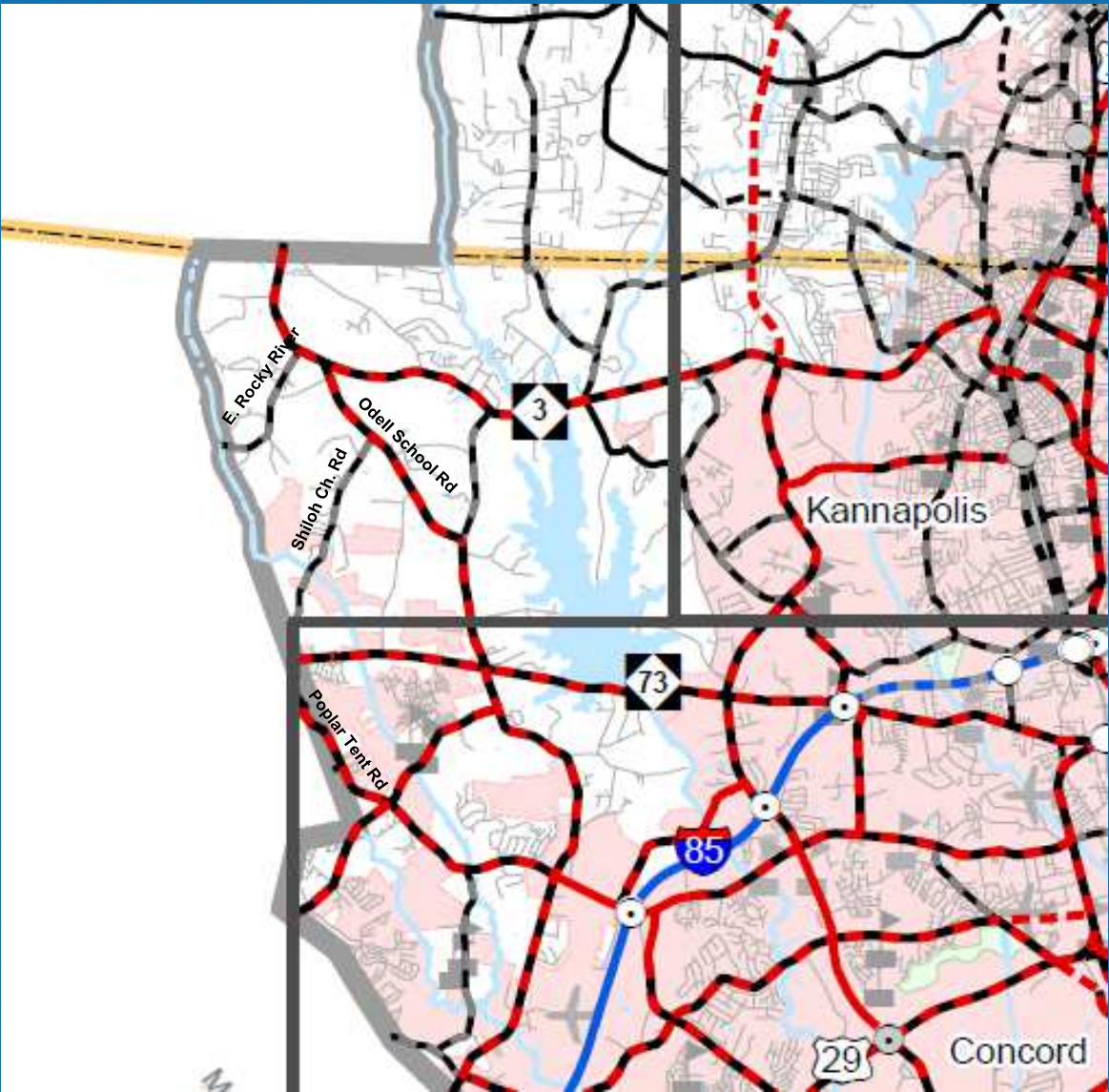
# Highway CTP



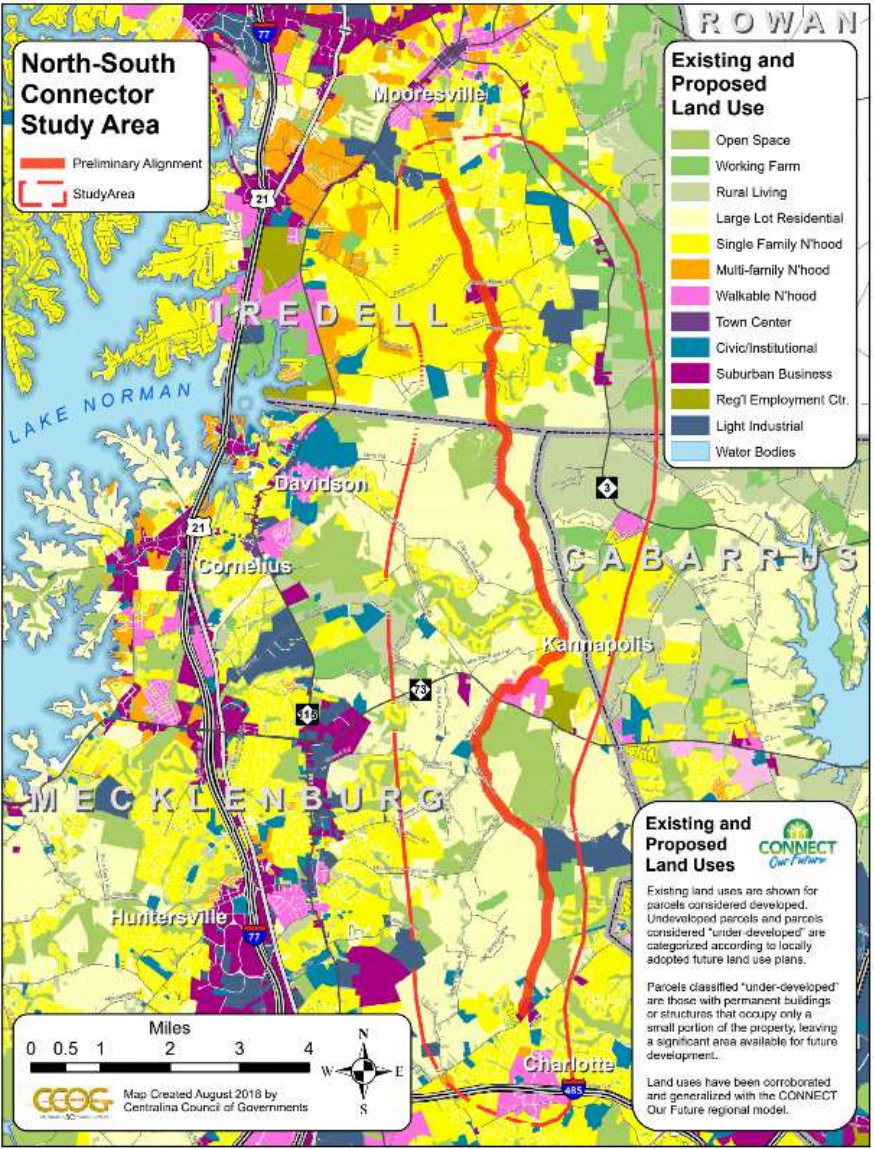
<b>Freeways</b>	Existing	Minor Thoroughfares	Existing
Needs Improvement	Needs Improvement	Needs Improvement	Needs Improvement
Recommended	Recommended	Recommended	Recommended
<b>Expressways</b>	Existing	<b>Interchanges</b>	<b>Grade Separations</b>
Needs Improvement	Existing	Existing	Existing
Recommended	Needs Improvement	Needs Improvement	Needs Improvement
	Recommended	Recommended	Recommended
<b>Boulevards</b>	Existing	Interchanges with Managed Lanes Access	
Needs Improvement	Existing	Existing	
Recommended	Needs Improvement	Needs Improvement	
<b>Other Major Thoroughfares</b>	Recommended	Recommended	
Existing			
Needs Improvement			
Recommended			



# Cabarrus Rowan MPO CTP

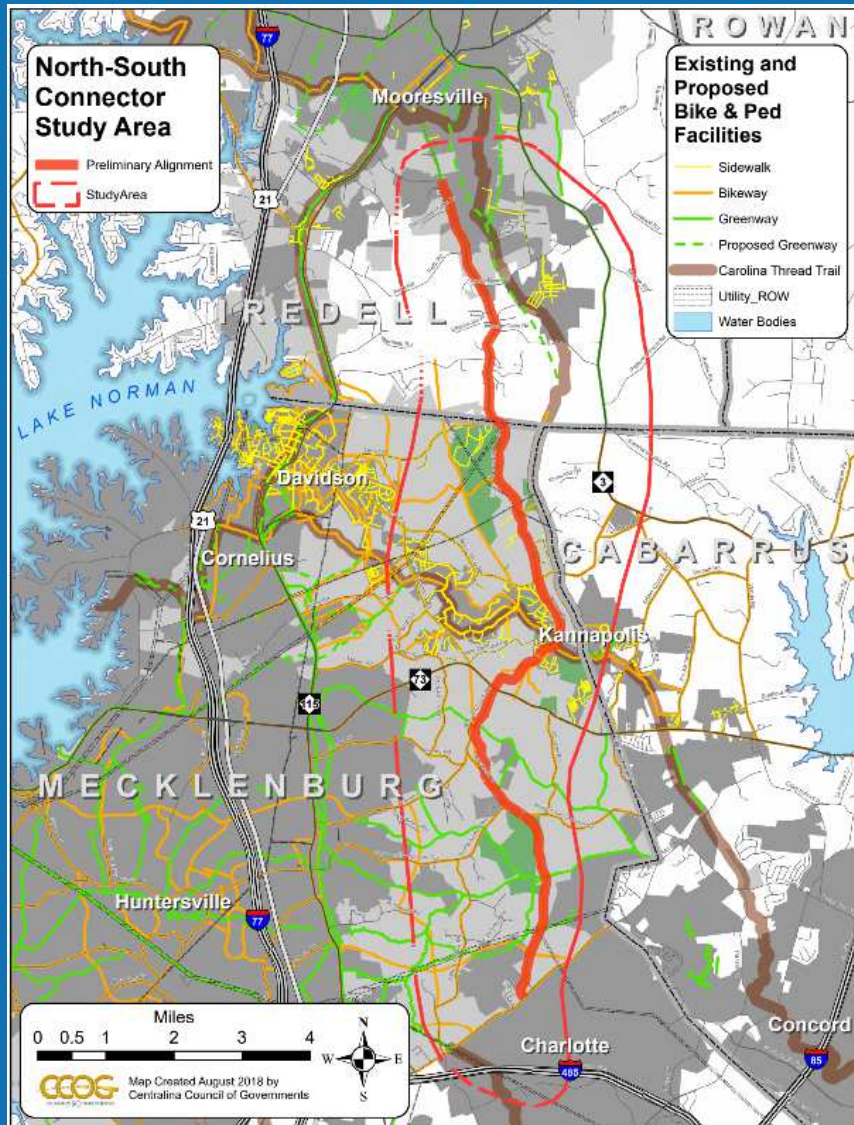


# Land Use

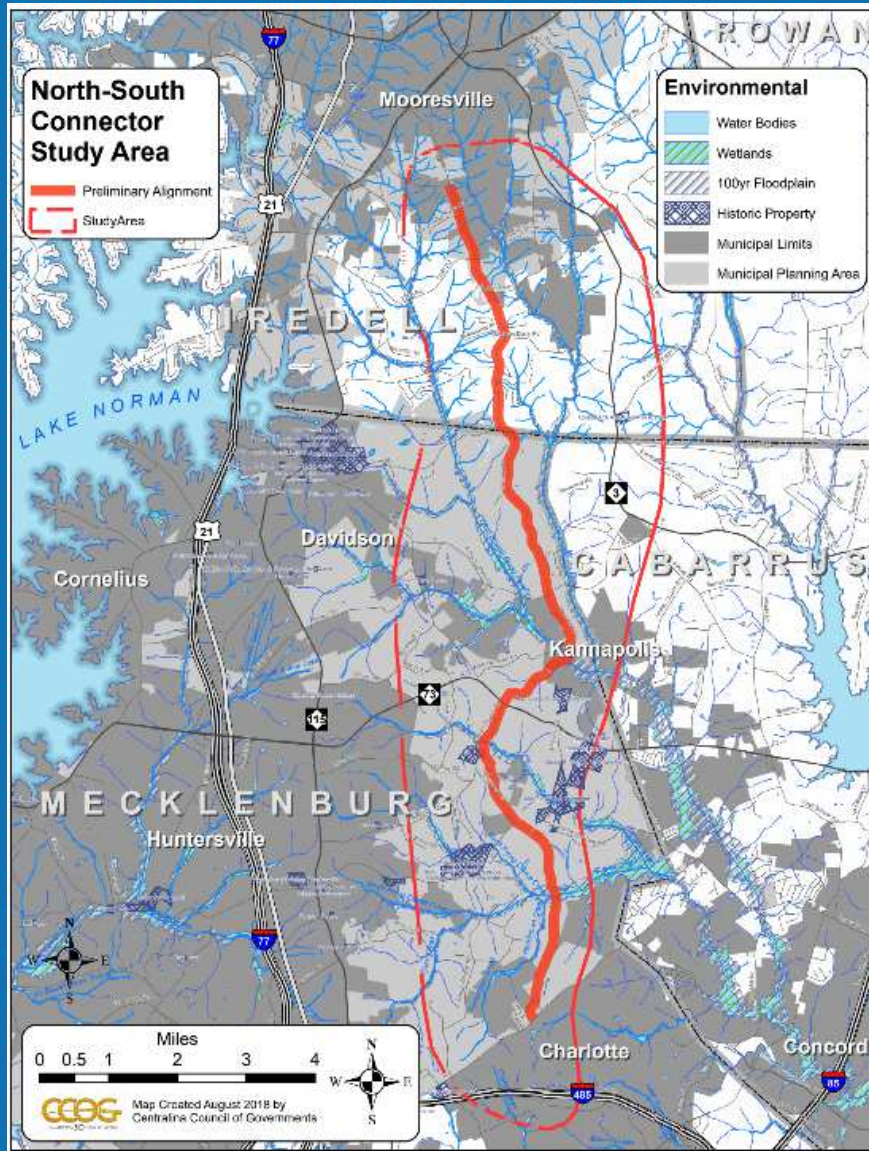




# Bike & Ped Facilities

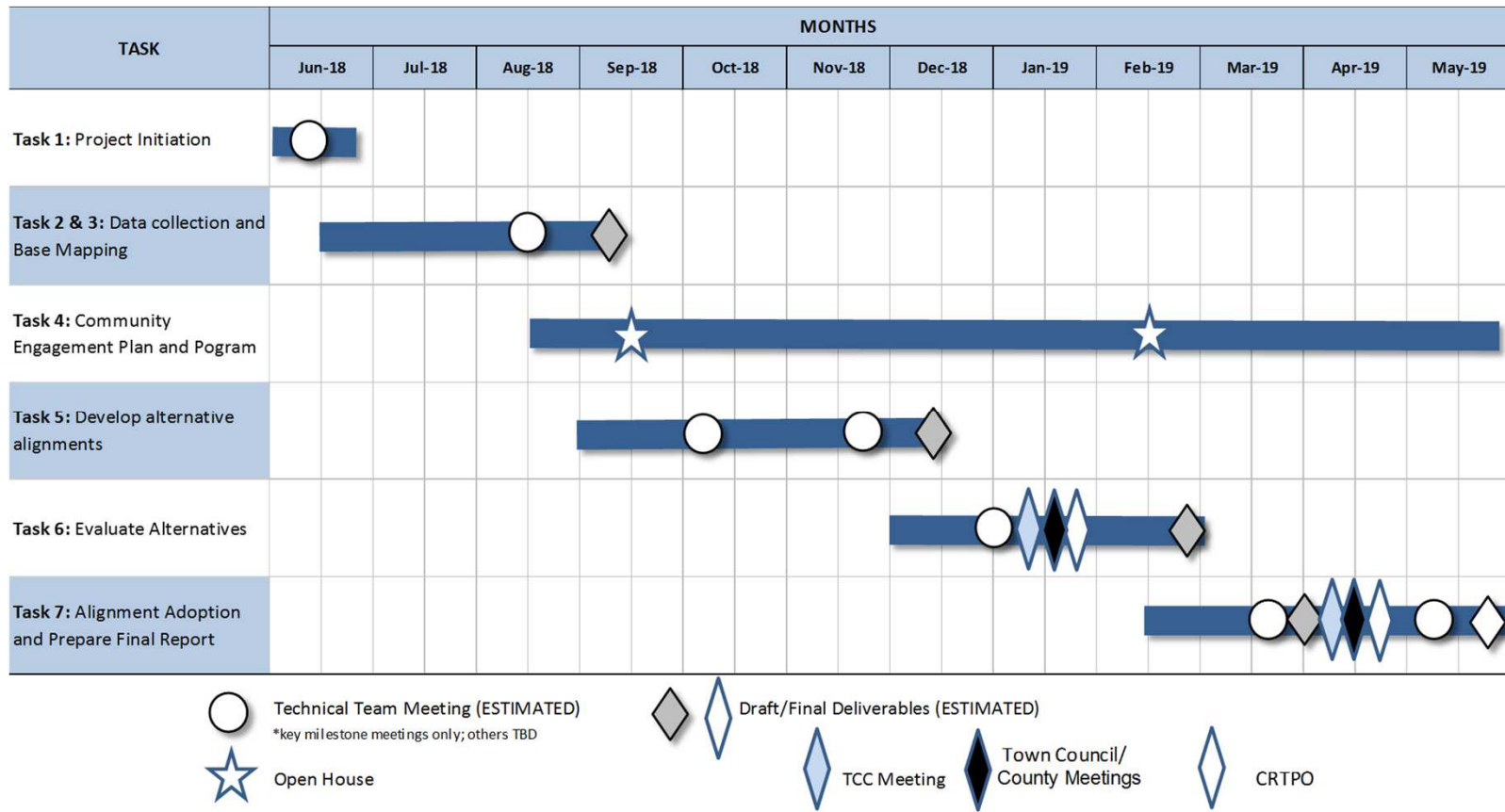






# Environmental

# Project Schedule





# THANK YOU

---

CONNECT WITH US





GS&P/NC, P.C.

AN AFFILIATE OF

G R E S H A M  
S M I T H   A N D  
P A R T N E R S

[www.greshamsmith.com](http://www.greshamsmith.com)