



Town of Davidson
Farmer's Market Public Space

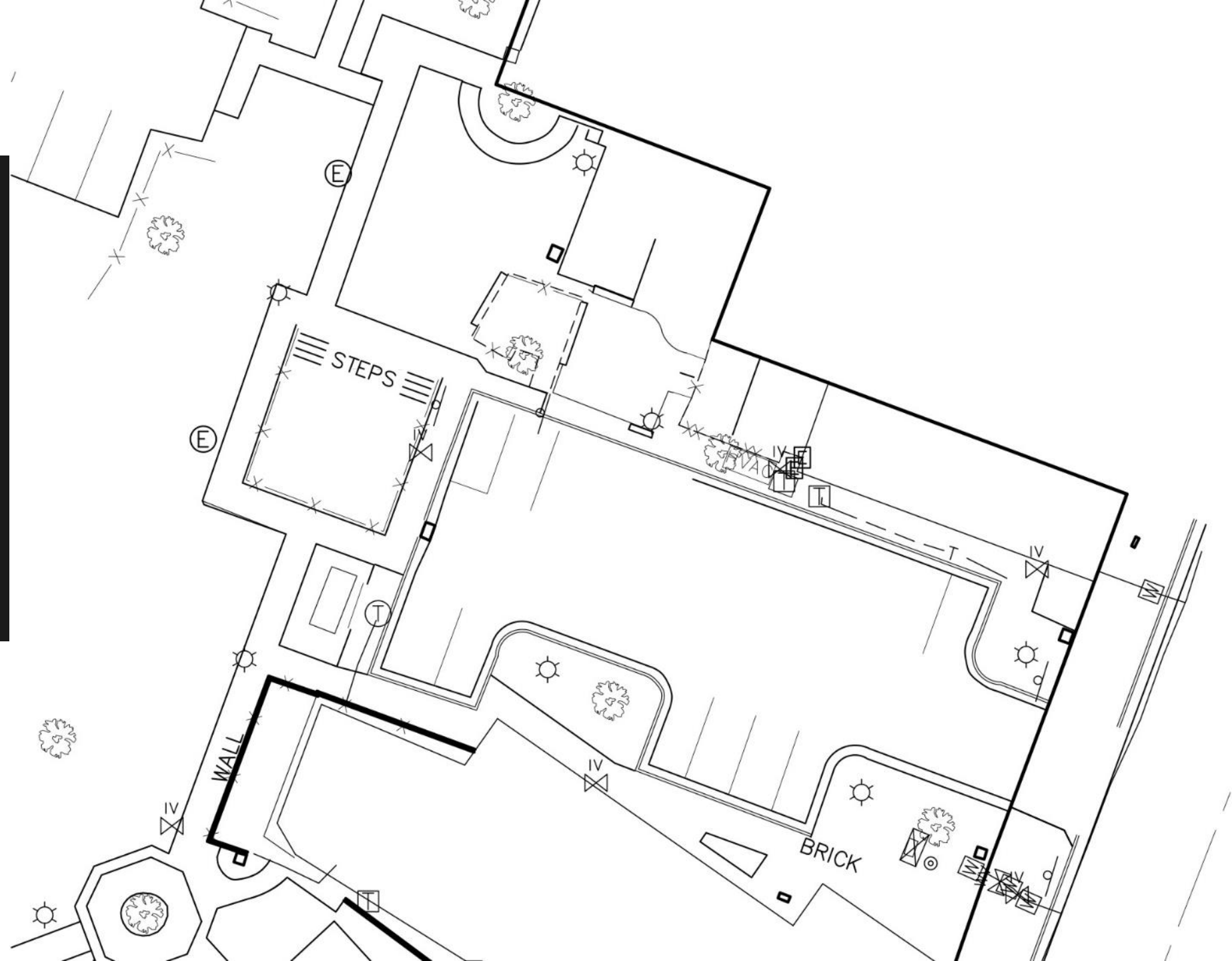
Conceptual
Design
Discussion



Agenda

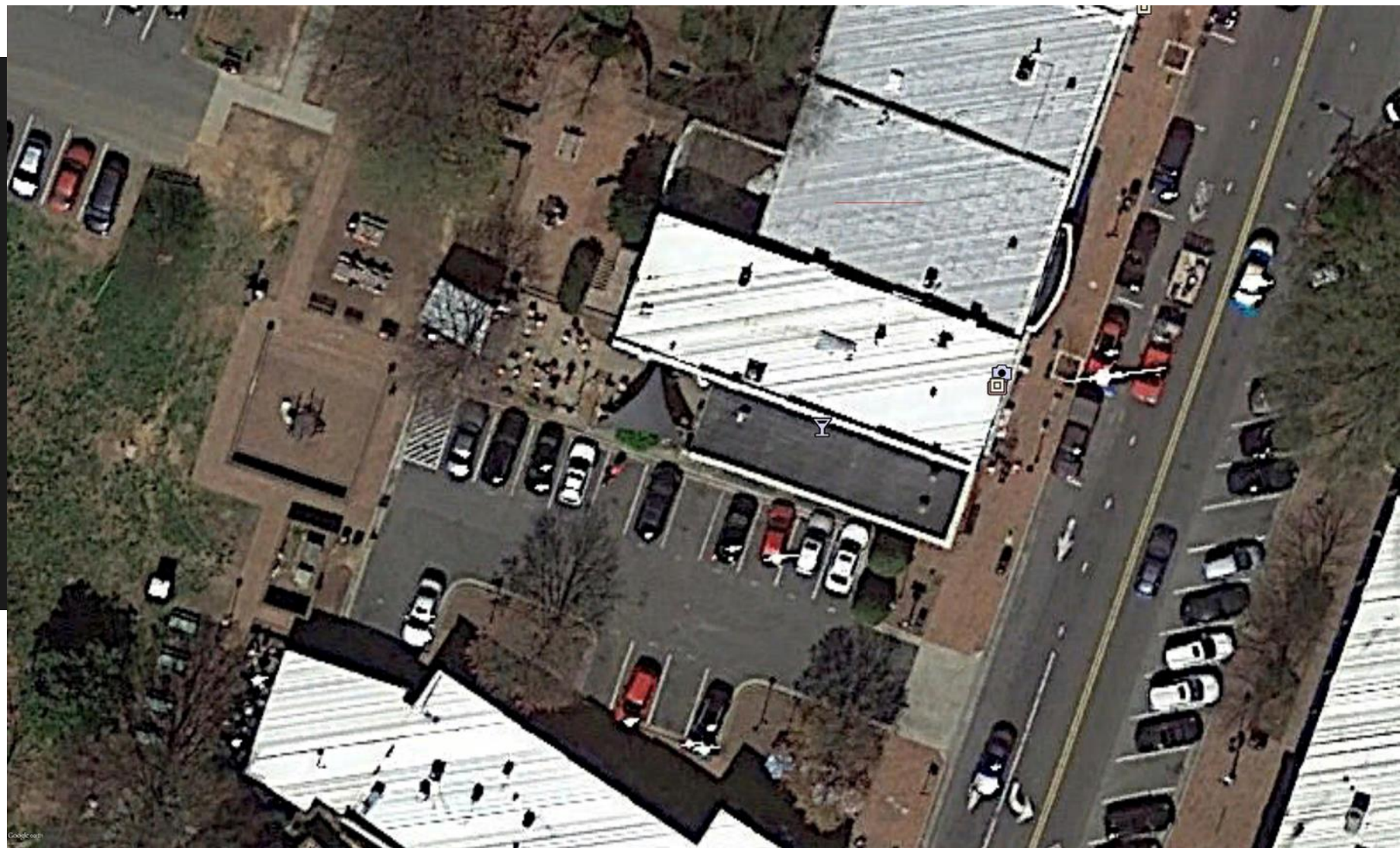
1. Existing Conditions
2. Concept Plan
3. Area Descriptions & Materials

Existing Conditions



Existing Conditions

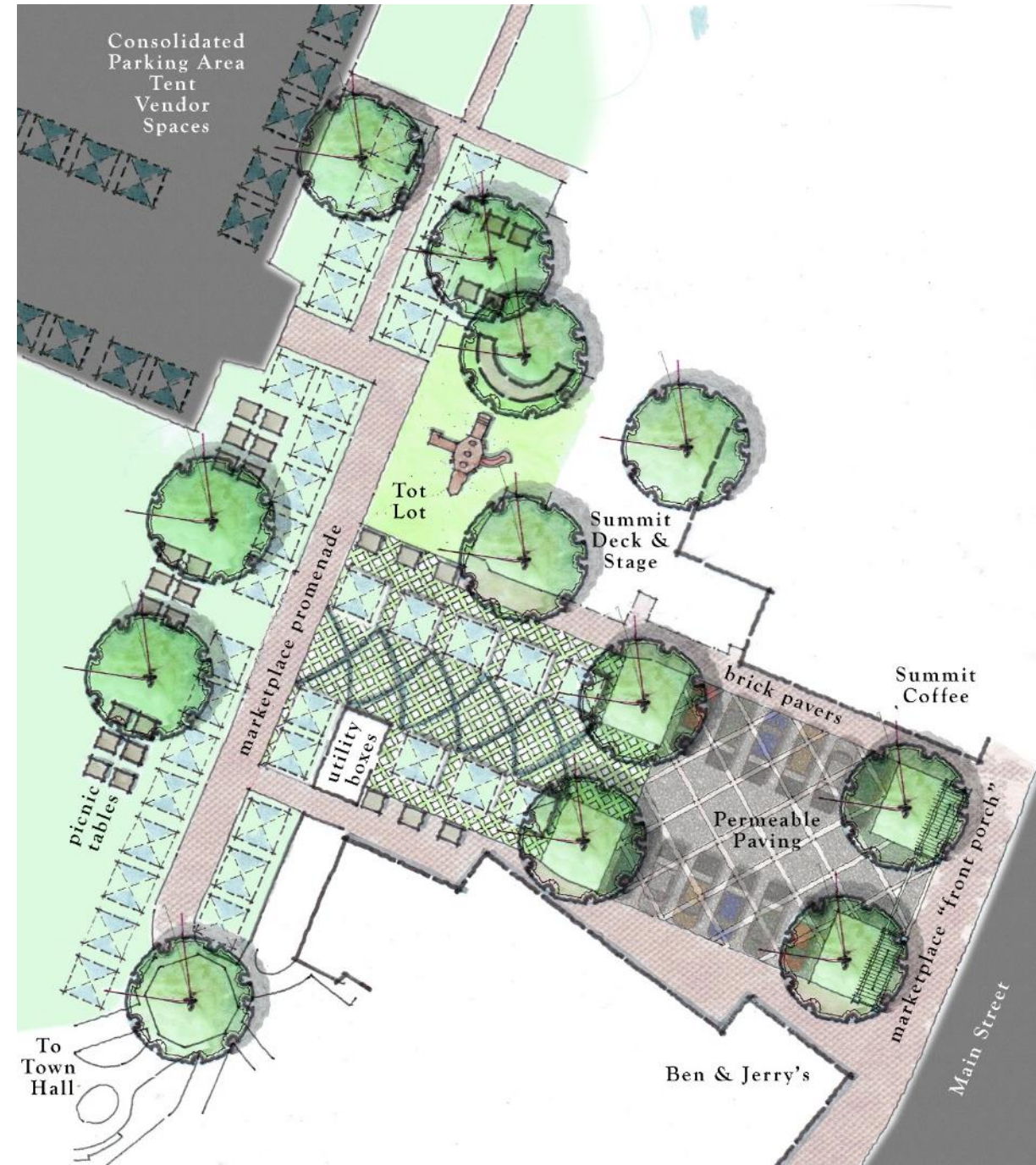
The space is currently a mid-block parking lot with a variety of public amenities.



Concept Plan

Key Takeaways

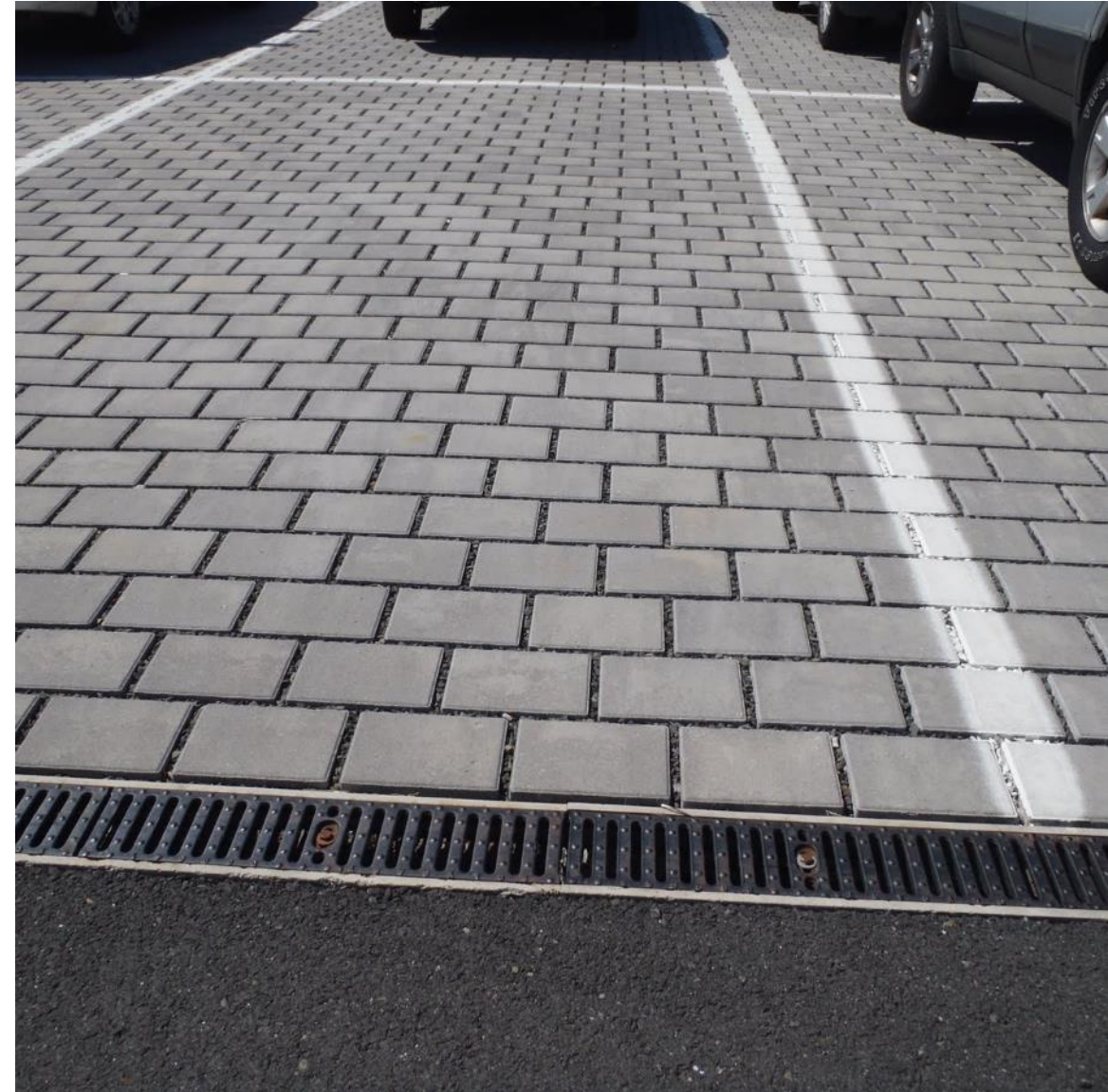
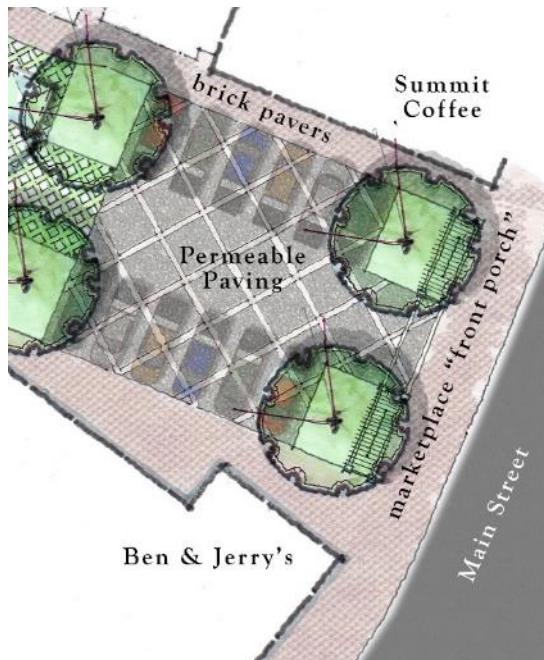
- Create Main Street gateway feature or “front porch” for marketplace (optional bollards for traffic control)
- Provide pull-in area for truck vendors with permeable paving (optional public parking during non-market times)
- Plant matching trees on north side of space
- Unify with brick paver sidewalks along edges adjacent to Summit and Ben & Jerry’s
- Provide a wide brick paver marketplace promenade with area for tents along the sides to create a north/south pedestrian flow
- Provide additional picnic tables in this area with umbrellas along with movable seating and tables
- Define space with string light poles/planters
- Relocate tot lot behind Summit stage area (need accessible surface)
- Allow consolidated parking area to be used as overflow for vendors and food trucks





Permeable Paving

This area is envisioned as a permeable paving area suitable for parking during off market times and as an area for truck vendors as needed. By eliminating curbs, the area becomes a flexible festival street.





Flexible Market Place

The flexible market area has a combination of durable pavers and turf that can withstand heavy foot traffic and tent use. The space can also accommodate movable seating during off market times. String lights create a “ceiling” for the space and a dreamy ambiance during the evening hours.



Tot Lot and Overflow Areas

The new tot lot equipment will be shifted behind the Summit Stage area to allow fluid pedestrian movement through the space. An artificial turf surface will provide a non-toxic, durable surface that can withstand the tremendous foot traffic. Additional picnic tables and movable seating will be provided in areas adjacent to tent locations.





