



MAIN STREET/N.C. 115 PEDESTRIAN IMPROVEMENTS

DAVIDSON, NC

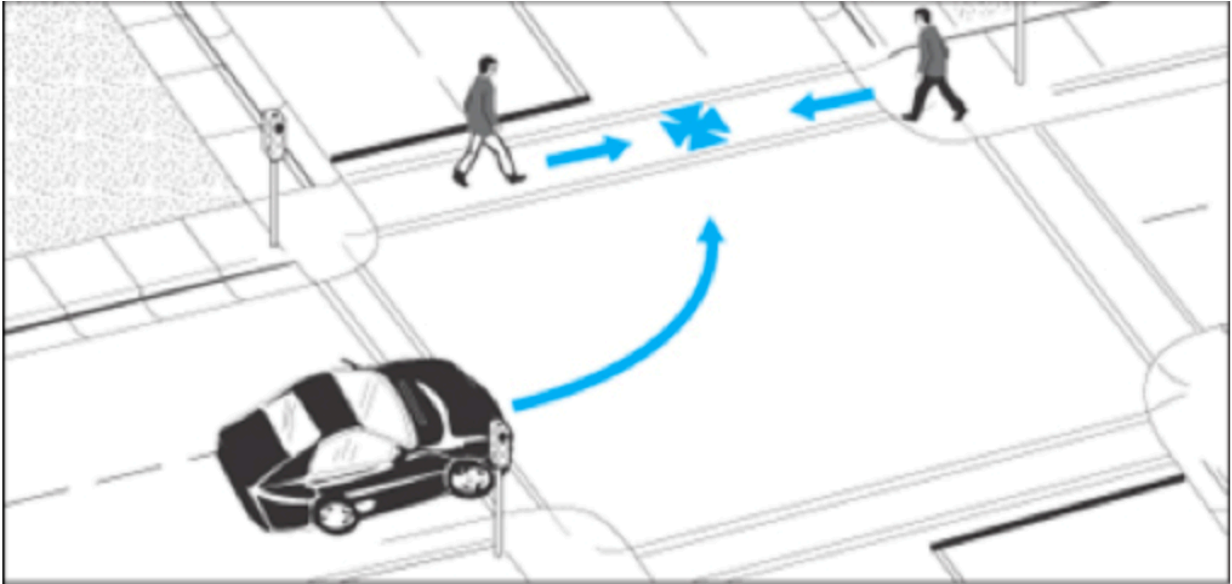


Image Source: www.pedbikesafe.org

FREQUENTLY ASKED QUESTIONS

What is a leading pedestrian interval?

This type of traffic signal phasing starts the pedestrian phase several seconds before any conflicting vehicle movement is given a green light. This allows the pedestrian to reach the middle of the crosswalk before a vehicle starts to move, which makes the pedestrian more visible to the motorist.

A leading pedestrian interval is designed to improve safety for pedestrians while limiting delays for motorists and traffic backups.

This type of signal phasing is already in place at the intersection of Beatty Street and Griffith Street in Davidson.

Where will the leading pedestrian interval be implemented?

The improvements will be made on N.C. 115/Main Street's intersections with:

- South Street/Chairman Blake Lane
- Concord Road
- Griffith Street/College Entrance

In addition to installing the leading pedestrian interval phasing, NCDOT will also install signal heads with flashing yellow arrows, where possible, for the vehicle movements that would be potentially in conflict with pedestrian movement

How does a leading pedestrian interval improve safety for pedestrians?

Once the leading pedestrian interval is installed, the "walk" signal for pedestrians will display three seconds before the green signal for drivers. This allows pedestrians to establish their presence in the crosswalk before cars enter the intersection and attempt to turn. Studies show a 60 percent reduction of pedestrian-vehicle collisions, as well as a reduction in the severity of those crashes, after implementation of a leading pedestrian interval.

How will the change impact pedestrians and motorists?

Motorists and pedestrians should continue to obey their respective signals at all times and stay alert when traveling through any intersection.

For more information, contact:

Sean Epperson, NCDOT Division 10 Traffic Engineer
704-983-4400 or smepperson@ncdot.gov